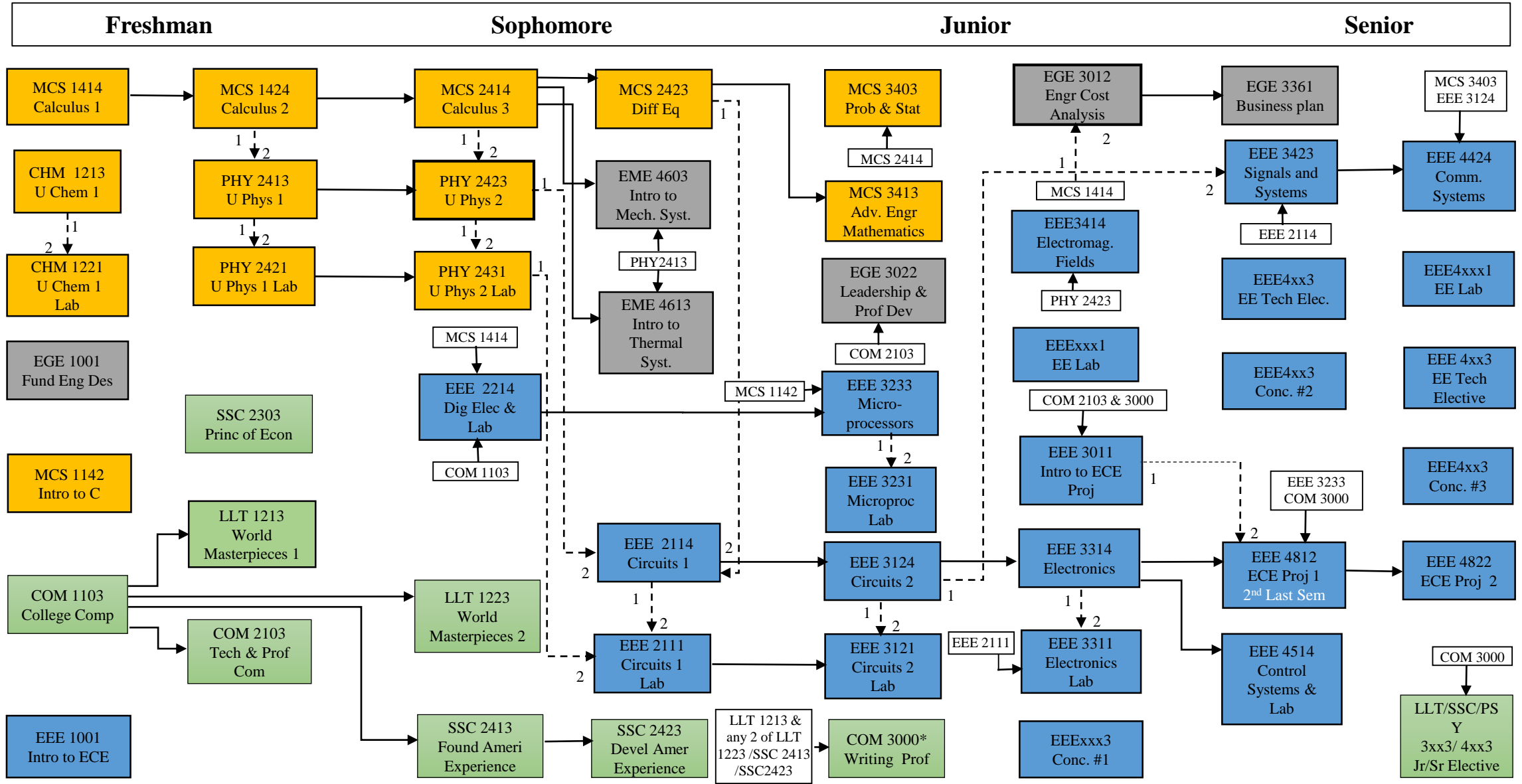


Bachelor of Science in Electrical Engineering Curriculum Flowchart (Fall 2018, 132 hours)



Key: 1 - - -> 2 Course (2) can be taken with course (1)
 Pre-req ->

XXX YYYY Course Title: Course is on the CRITICAL PATH for 4-year graduation plan
 *: Visit https://www.ltu.edu/arts_sciences/humanities_ss_comm/writing-proficiency-exam.asp & Online Course Catalog

Note: See Program Handout for details about selecting Concentrations and EE Electives & complete pre-req structure (note some lower level pre-reqs are not shown with upper level subjects)