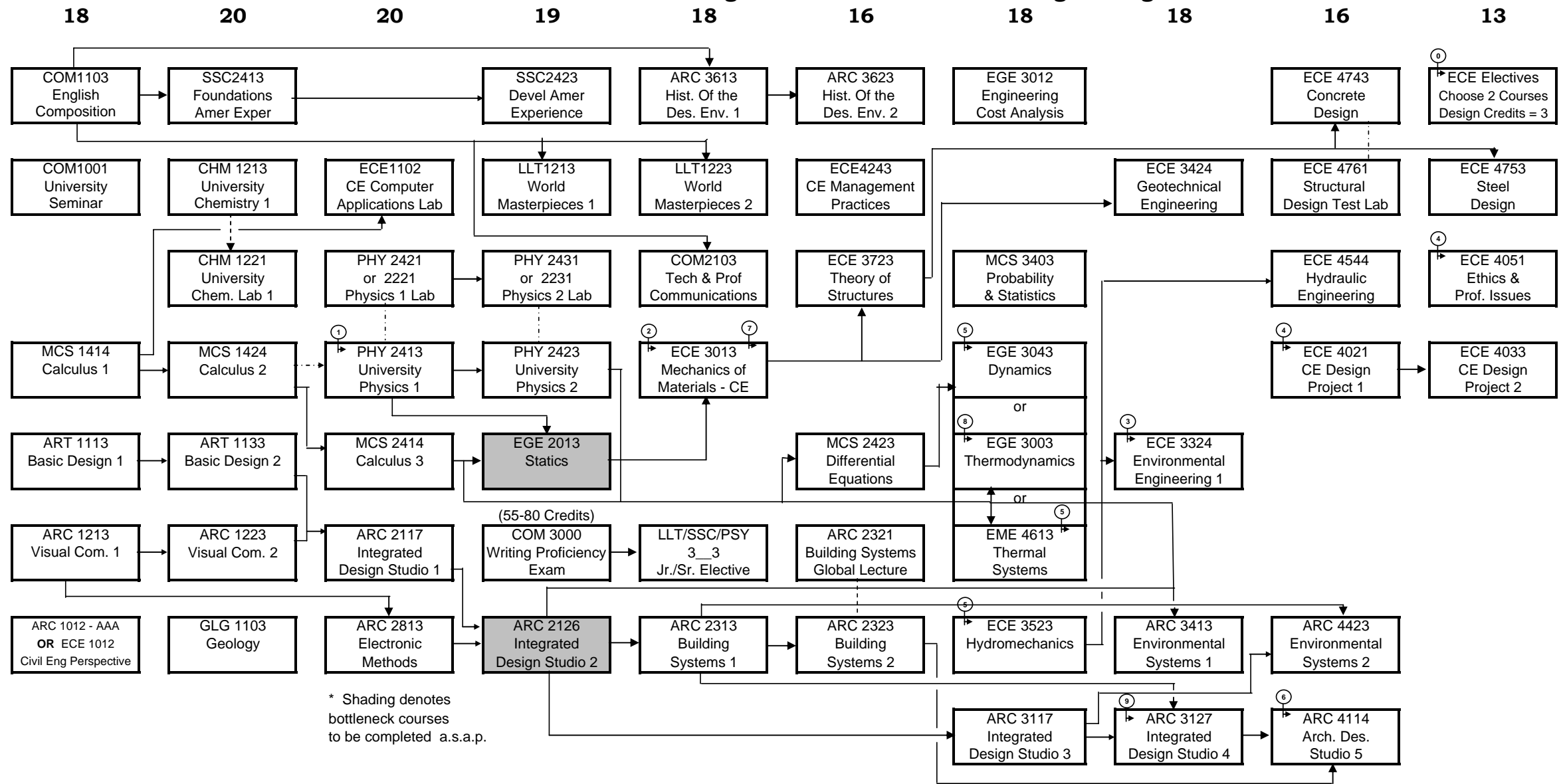


PROGRESSION FLOWCHART: Bachelor of Science Dual Degree in Architecture & Civil Engineering



KEY: Prerequisite
 Corequisite

Name: _____	I.D. No. _____		
NOTES	① Placement ② MCS2414 is a pre-req. ③ CHM 1213 is a pre-req.	④ Senior standing (90 credits) or permission of C.E. dept. chair. ⑤ EGE2013 is a pre-req ⑥ ECE 3723 is a pre-req ⑦ Take Mechanics of Materials a.s.a.p. after Statics	⑧ PHY 2413 is a pre-req ⑨ ECE 3013 is a pre-req ⑩ See Dept for list of approved Electives.

Oct. 23, 2006