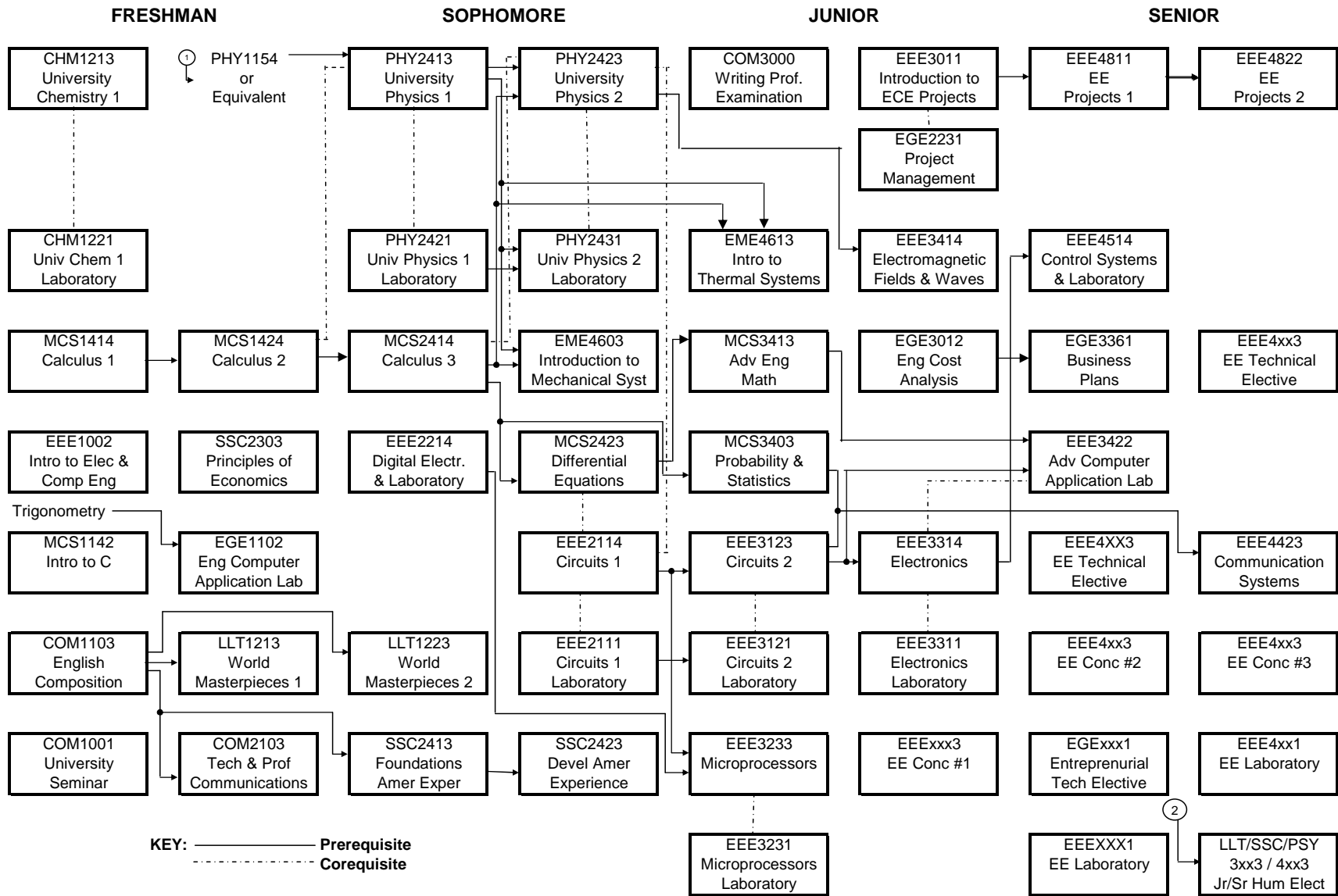


# Bachelor of Science in Electrical Engineering

Effective Fall 2007



Name: \_\_\_\_\_ I.D. No. \_\_\_\_\_

NOTES

*Computer Engineering*  
 EEE3223 Adv Digital  
 EEE4253 Comp Arch 1  
 EEE4243 Embedded Syst

*Electronics Engineering*  
 EEE3223 Adv Digital  
 EEE4323 Adv Electronics  
 EEE4713 Optoelectronics

*Energy Engineering*  
 EEE3513 Intro to Electrical Syst  
 EEE4133 Electrical Machinery  
 EEEXX3 Energy Tech. Elective

① Credit for this course does not count toward the Elect. Eng. Degree

② COM3000 Writing Proficiency Examination