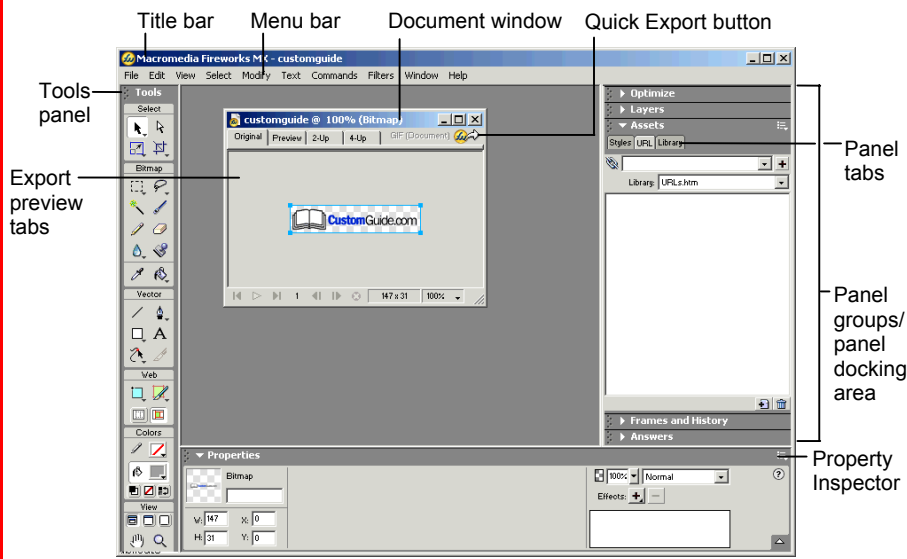


Macromedia® Fireworks MX

Quick Reference Card

Fireworks MX Workspace



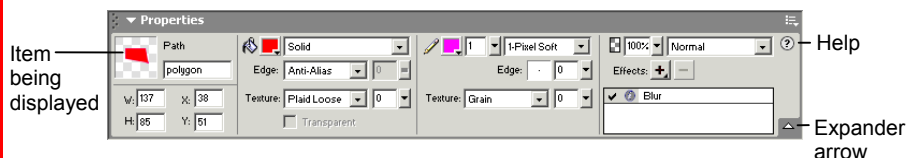
Tools Panel

- Pointer:** Select an entire object or pixel area
 - Select Behind:** Selects objects behind other objects
 - Subselection:** Select points or objects within a group
 - Crop:** Remove parts of an image
 - Export Area:** Select an area of the image, and then export the selected area as its own file
 - Scale:** Transform the object using these tools
 - Skew** **Distort**
 - Marquee:** Select a rectangular pixel area
 - Oval Marquee:** Select an oval pixel area
 - Lasso:** Select a freeform or polygon pixel area
 - Polygon Lasso**
 - Magic Wand:** Select a pixel area of similar coloring
 - Brush:** Paint a freeform shape
 - Pencil:** Draw a freeform shape
 - Eraser:** Remove or color over pixels
 - Blur:** Smooth edges
 - Sharpen:** Focus edges
 - Dodge:** Lighten pixels
 - Burn:** Darken pixels
 - Smudge:** Smear pixels
 - Rubber Stamper:** Duplicate areas of a bitmap image
 - Eyedropper:** Click the eyedropper cursor on the color you want to use
 - Paint Bucket:** Change the color of selected pixels or selected object
 - Gradient:** Fill pixel area, vector, or text with gradient of colors
 - Pen:** Place and connect points on the canvas to create an object
 - Line:** Draw a line
 - Rectangle:** Draw a rectangle or any of the shapes in this tool group
 - Vector Path:** Draw freeform vector shapes
 - Rounded Rectangle**
 - Redraw Path:** Extend a path using the same characteristics
 - Ellipse** **Polygon**
 - Freeform:** Bend or reshape vector paths
 - Text:** Insert text in the document
 - Reshape Area:** Distort or pull a vector path with the reshape area pointer
 - Knife:** Slice a path into two or more paths
 - Path Scrubber-additive or subtractive:** Increase or decrease the size of a stroke
 - Slice:** Draw a rectangular or polygonal slice area with this group
 - Polygon Slice**
 - Rectangle Hotspot:** Draw hotspot shapes with this tool group
 - Zoom:** View the document close-up or far away
 - Oval** **Polygon**
 - Hand:** Click and drag to move around in the document
- Tip:** The Tools are arranged by category: Select, Bitmap, Vector, Web, Colors, and View. Fireworks MX knows the mode in which you want to work by the tool chosen.

Keyboard shortcuts

Import	<Ctrl> + <R>	Show All	<Ctrl> + <Shift> + <L>
Export	<Ctrl> + <Shift> + <R>	Rulers	<Ctrl> + <Alt> + <R>
Export Preview	<Ctrl> + <Shift> + <X>	Show Grid	<Ctrl> + <Alt> + <G>
Duplicate	<Ctrl> + <Alt> + <D>	Snap to Grid	<Ctrl> + <Alt> + <Shift> + <G>
Clone	<Ctrl> + <Shift> + <D>	Hotspot	<Ctrl> + <Shift> + <U>
Paste Inside	<Ctrl> + <Shift> + <V>	Slice	<Alt> + <Shift> + <U>
Paste Attributes	<Ctrl> + <Alt> + <Shift> + <V>	Group	<Ctrl> + <G>
Zoom In	<Ctrl> + <=>	Ungroup	<Ctrl> + <Shift> + <G>
Zoom Out	<Ctrl> + <->	Hide/Show Panels	<F4>
Fit Selection	<Ctrl> + <Alt> + <O>	Preview in Primary Browser	<F12>
Fit All	<Ctrl> + <O>	Preview in Secondary Browser	<Ctrl> + <F12>
Full Display	<Ctrl> + <K>		
Hide Selection	<Ctrl> + <L>		

Property Inspector



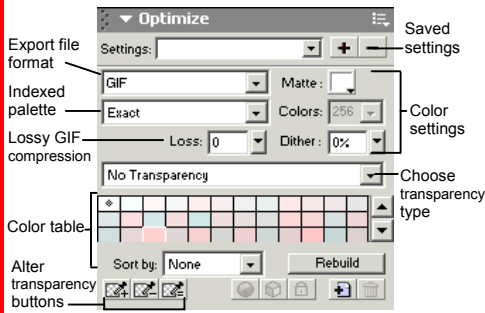
The **Property Inspector** displays detailed information about items in the Fireworks workspace.

- Select a vector object to view detailed information: ex. stroke or fill color, size, effects, texture,
- Open a document to view its properties: ex. file name and type, canvas size and color
- Select a tool to view the options available when using the tool: ex. color, style, size
- To expand or contract the bottom half of the inspector:** Click the **Expander arrow** in the Property Inspector.

Panels and Panel Groups

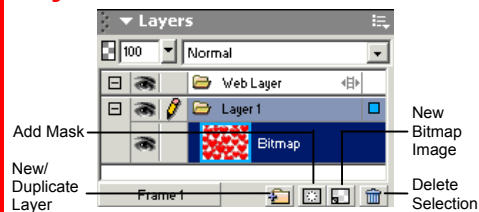
- **To View a Panel:** Select **Window** from the menu bar and select the panel you want to view. Or, click the title of the panel group, or click the expander arrow in panel group title bar.
- **To View More Options:** Click the panel's **Options menu**.
- **To Move, Dock, or Undock a Panel or Panel Group:** Drag the panel gripper (dotted area on the left side of the panel title bar) to a new location or docking area.

Optimize Panel



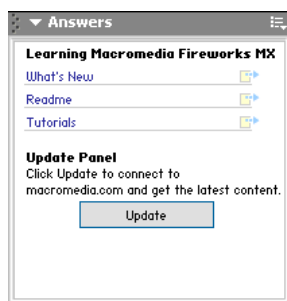
Optimize the image for the best-looking quality with the fastest download time.

Layers Panel



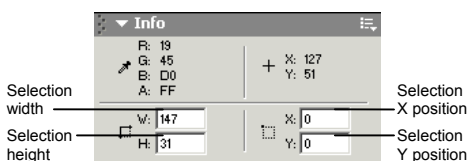
Add, delete, or edit layers, or insert objects in layers. Use layers to stack and organize objects.

Answers Panel



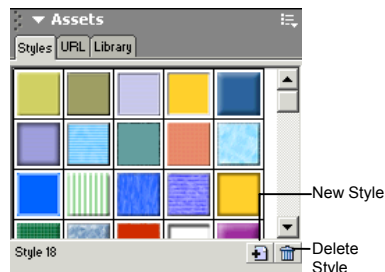
Connect to the Macromedia web site to learn about and access the most recent information about Fireworks.

Info Panel

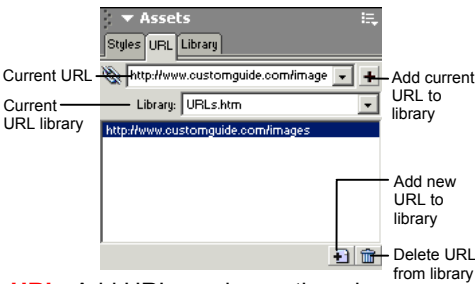


Find specific information for the selected object: size, location, and colors used in the object.

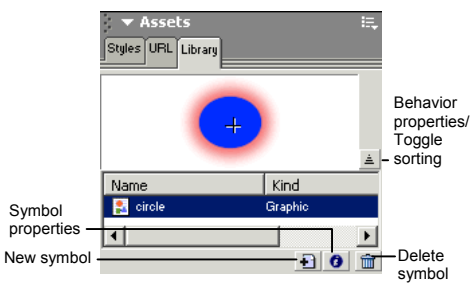
Assets



Styles: Apply a predefined style to a selected object or text.

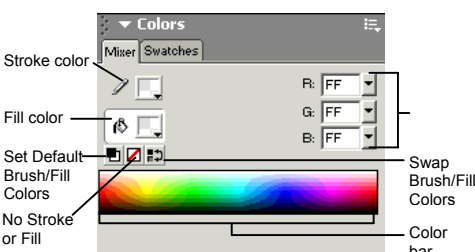


URL: Add URLs and save them in designated libraries so that you can reuse the URL easily.

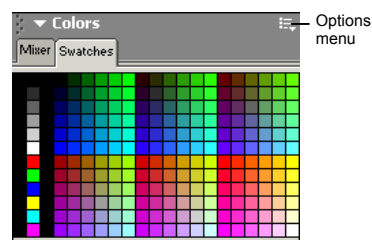


Library: Create symbols that you will use repeatedly in the document and add them to the library.

Colors

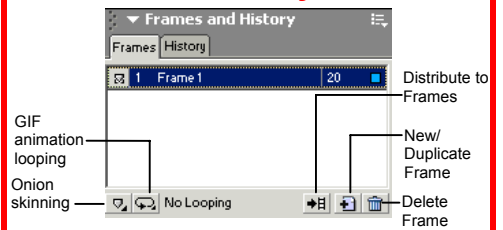


Mixer: Manage the colors used in the document; create a new color or choose to use a different color model in your document.

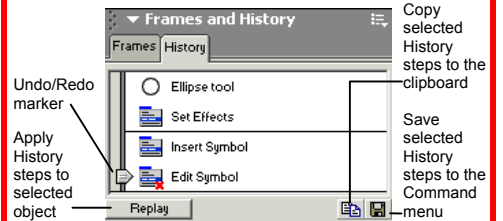


Swatches: Create a new swatch to create your own color scheme, or modify an existing swatch.

Frames and History

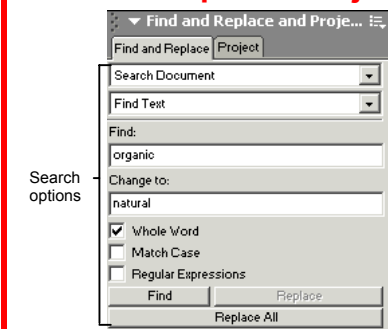


Frames: Create frames for use in animations or behaviors, such as a button rollover. Use with the Behaviors panel.

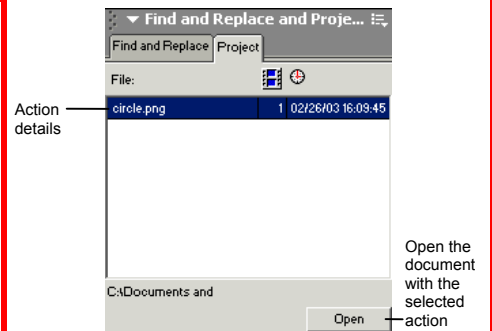


History: Move the slider to undo or redo previous actions, or copy or save selected steps for future use.

Find and Replace/ Project Log

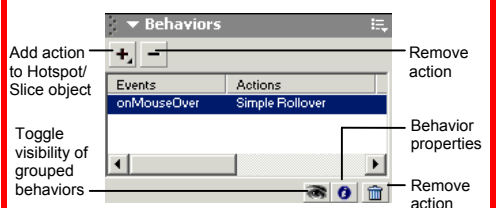


Find and Replace: Search and replace items such as colors, URLs, fonts and text.



Project Log: Helps keep track of find and replace actions in multiple files.

Behaviors Panel



Apply animation to an object such as a rollover, swap image, or pop-up menu. Use with the Frames panel.