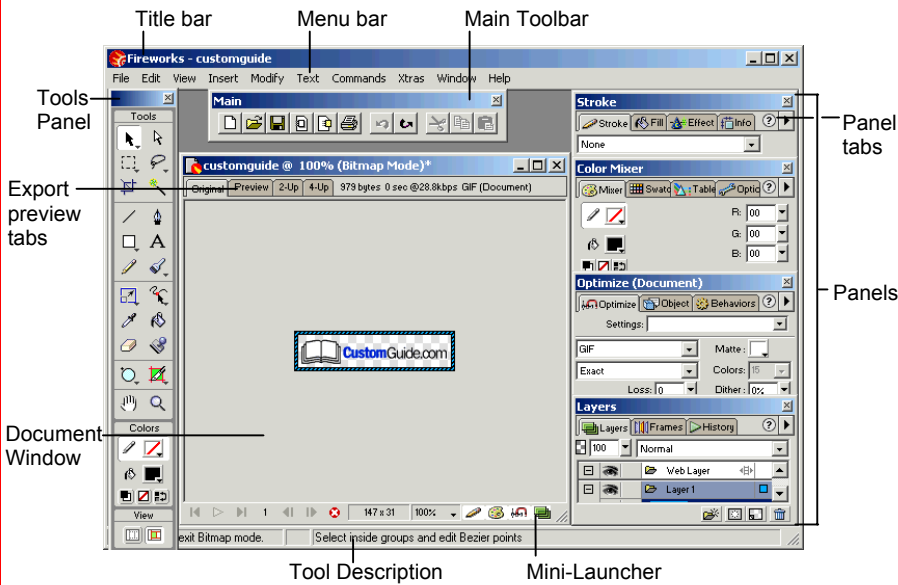


# Macromedia® Fireworks 4

## Quick Reference Card

### Fireworks 4 Workspace



### Tools Panel

**To Display a Tool Group:** Click and hold down a tool with a small triangle in the lower-right corner of the button. Move the cursor to select another tool from the group.

\*Use in bitmap mode.

\*\*Use in vector mode.

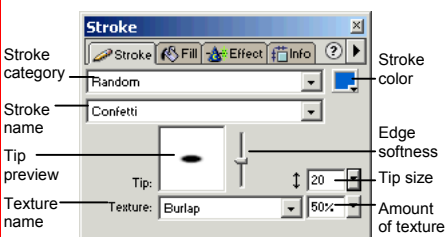
- Pointer:** Select an entire object or pixel area
- Select Behind:** Selects objects behind other objects
- Export Area:** Select and an area and export of the area as its own file
- Marquee\*:** Select a rectangular pixel area
- Oval Marquee\*:** Select an oval pixel area
- Crop:** Remove parts of an image
- Line:** Draw a line
- Rectangle:** Draw a rectangle or any of the shapes in this tool group
- Rounded Rectangle**
- Ellipse**
- Polygon**
- Pencil:** Draw a freeform shape like you would with pencil and paper
- Scale\*\*:** Transform the object using this tool group
- Skew**
- Distort**
- Eyedropper:** Select an object and lift the color you want to apply to the object
- Knife\*\*:** Slice a path into two or more paths
- Eraser\*:** Remove or color over pixels
- Rectangle Hotspot:** Apply hotspot shapes on images with this tool group
- Oval Hotspot**
- Polygon Hotspot**
- Hand:** Click and drag to move around in the document
- Subselection:** Select points or objects within a group
- Lasso\*:** Select a freeform or polygon pixel area with this tool group
- Polygon Lasso\***
- Magic Wand\*:** Select a pixel area of similar coloring
- Pen:** Place and connect points on the canvas to create an object
- Text:** Insert text in the document
- Brush:** Paint a freeform shape
- Redraw Path\*\*:** Use the selected path's properties to redraw part of it
- Freeform\*\*:** Bend or reshape vector paths
- Reshape Area\*\*:** Distort or pull all the path within the reshape area pointer
- Path Scrubber-additive:** Increase the size of a stroke
- Path Scrubber-subtractive:** Decrease the size of a stroke
- Paint Bucket:** Change the color of selected object
- Rubber Stamper\*:** Duplicate areas of a bitmap image
- Slice\*\*:** Draw a rectangular or polygonal slice area
- Polygon Slice\*\***
- Zoom:** View the document close-up or far away

### Keyboard shortcuts

Import	<Ctrl> + <R>	Show All	<Ctrl> + <Shift> + <L>
Export	<Ctrl> + <Shift> + <R>	Rulers	<Ctrl> + <Alt> + <R>
Export Preview	<Ctrl> + <Shift> + <X>	Show Grid	<Ctrl> + <Alt> + <G>
Duplicate	<Ctrl> + <Alt> + <D>	Snap to Grid	<Ctrl> + <Alt> + <Shift> + <G>
Clone	<Ctrl> + <Shift> + <D>	Hotspot	<Ctrl> + <Shift> + <U>
Paste Inside	<Ctrl> + <Shift> + <V>	Slice	<Alt> + <Shift> + <U>
Paste Attributes	<Ctrl> + <Alt> + <Shift> + <V>	Group	<Ctrl> + <G>
Zoom In	<Ctrl> + <=>	Ungroup	<Ctrl> + <Shift> + <G>
Zoom Out	<Ctrl> + <->	Hide/Show Panels	<F4>
Fit Selection	<Ctrl> + <Alt> + <O>	Preview in Primary Browser	<F12>
Fit All	<Ctrl> + <O>	Preview in Secondary Browser	<Ctrl> + <F12>
Full Display	<Ctrl> + <K>		
Hide Selection	<Ctrl> + <L>		

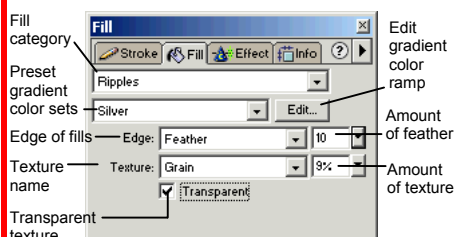
### Panels

#### Stroke Panel



Format and enhance a selected line or object border with various stroke types, widths, and colors.

#### Fill Panel

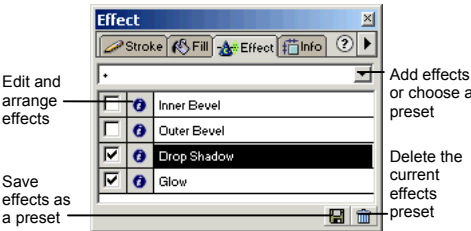


Format and enhance a selected object's fill with various fill types, colors, and textures.

## Panels (continued)

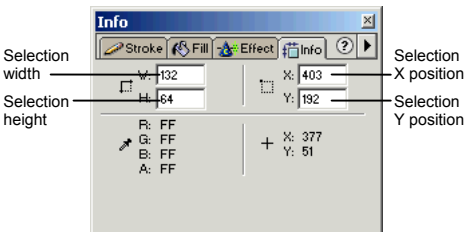
- **To View a Panel:** Select **Window** from the menu bar and select the panel you want to view.
- **To View More Options:** Click the panel's **Options menu**.
- **To Get Help:** Click the **Help button** for more information on the panel.

## Effect Panel



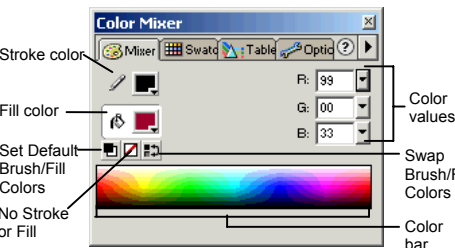
Apply an effect to a selected object, such as glow, shadow, or bevel. Edit the effects to change its properties. Or, create and use a preset collection of pre-formatted effects.

## Info Panel



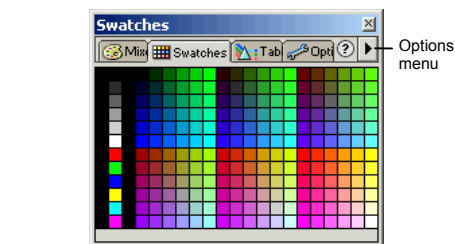
Find specific information for the selected object: size, location, and colors used in the object. Enter exact location coordinates on the canvas or enter the exact height and width of the object in pixels.

## Color Mixer Panel



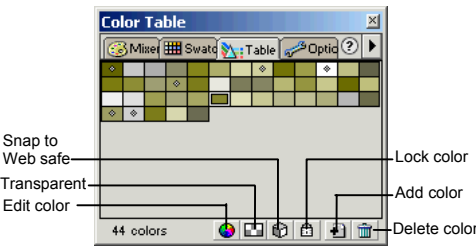
Create a new color or choose to use a different color model in your document.

## Swatches Panel



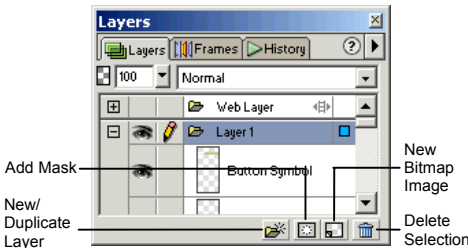
Create a new swatch to create your own color scheme or modify an existing swatch.

## Tables Panel



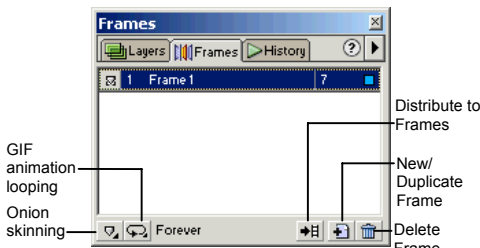
Compile all the colors in an image, or edit colors in the image.

## Layers Panel



Add, delete, or edit layers, or insert objects in layers. Use layers to stack and organize objects in the image.

## Frames Panel



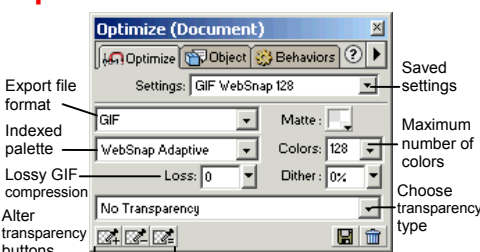
Create frames for use in animations or behaviors, such as rollover buttons.

## History Panel



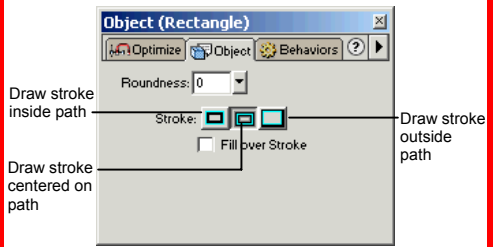
Undo or redo previous actions, or copy or save selected steps for future use.

## Optimize Panel



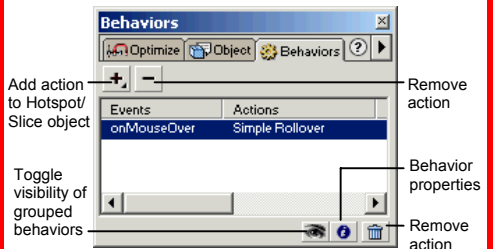
Optimize the image for the best-looking quality with the fastest download time.

## Object Panel



Adjust an object's properties.

## Behaviors Panel



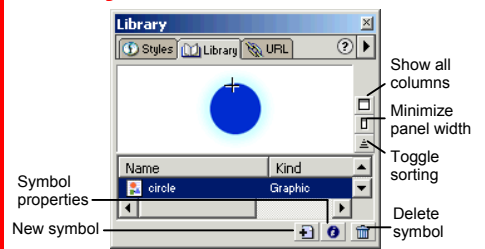
Apply animations to an object such as a rollover, swap image, or pop-up menu.

## Styles Panel



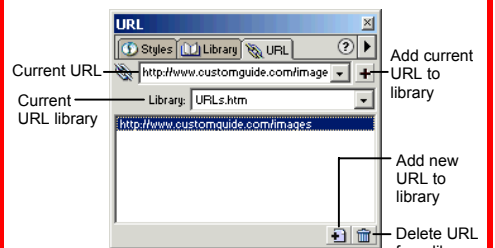
Apply a predefined style to a selected object or text.

## Library Panel



Create and add symbols to the library that you will use repeatedly in the document.

## URL Panel



Assign a Web address to text or images. The URL panel stores the address for easy access in the future.