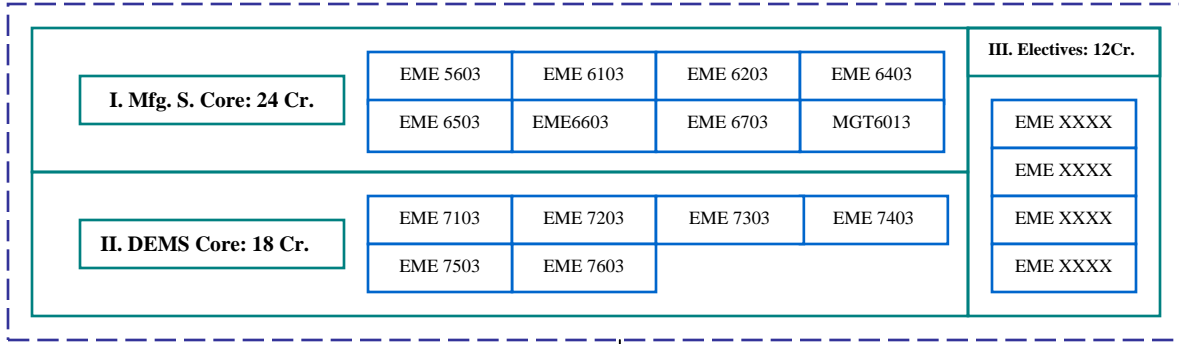
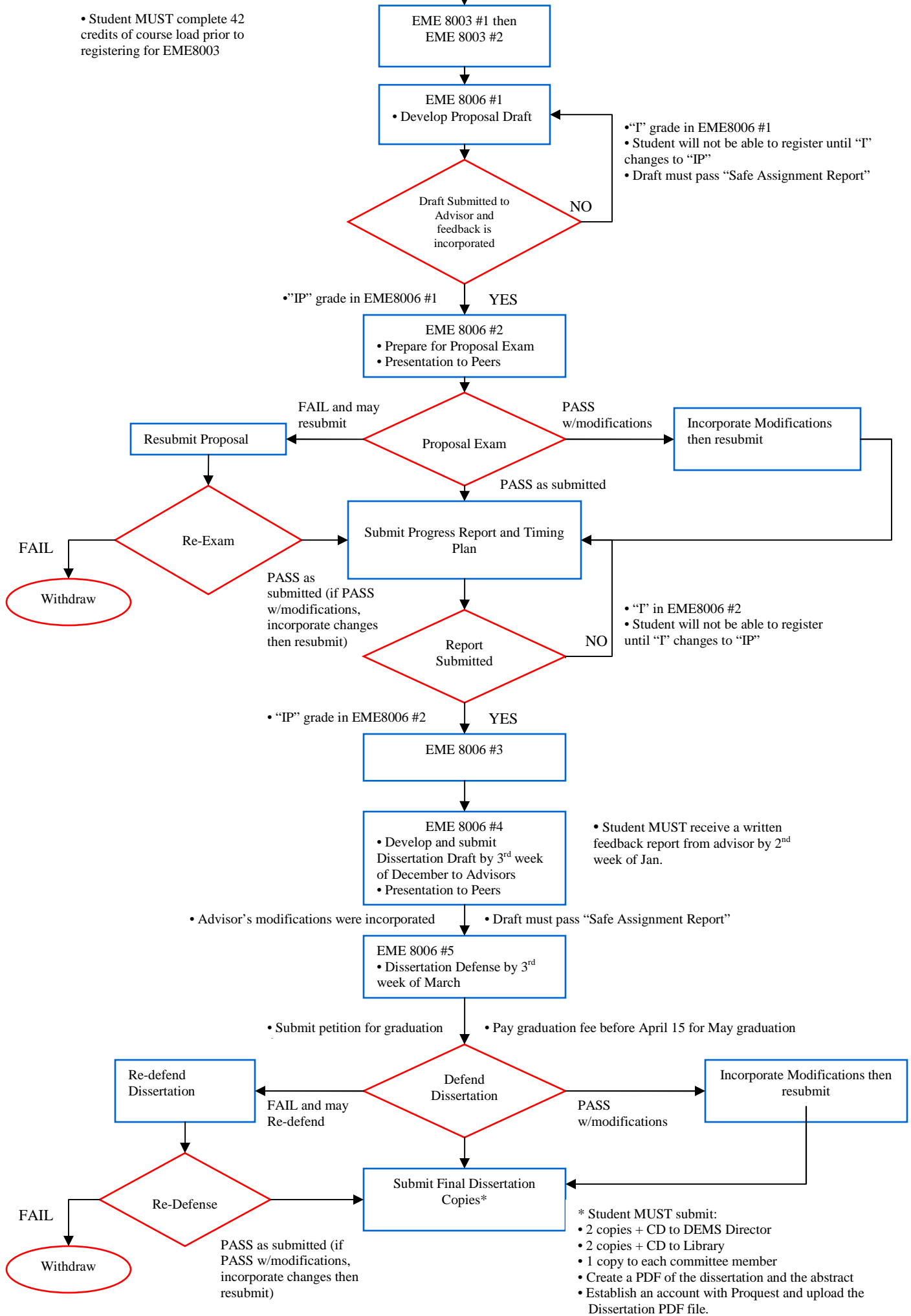




DEMS Process Flow Chart



• Student MUST complete 42 credits of course load prior to registering for EME8003



• "I" grade in EME8006 #1
• Student will not be able to register until "I" changes to "IP"
• Draft must pass "Safe Assignment Report"

• "I" in EME8006 #2
• Student will not be able to register until "I" changes to "IP"

• Student MUST receive a written feedback report from advisor by 2nd week of Jan.

• Advisor's modifications were incorporated • Draft must pass "Safe Assignment Report"

* Student MUST submit:
• 2 copies + CD to DEMS Director
• 2 copies + CD to Library
• 1 copy to each committee member
• Create a PDF of the dissertation and the abstract
• Establish an account with Proquest and upload the Dissertation PDF file.