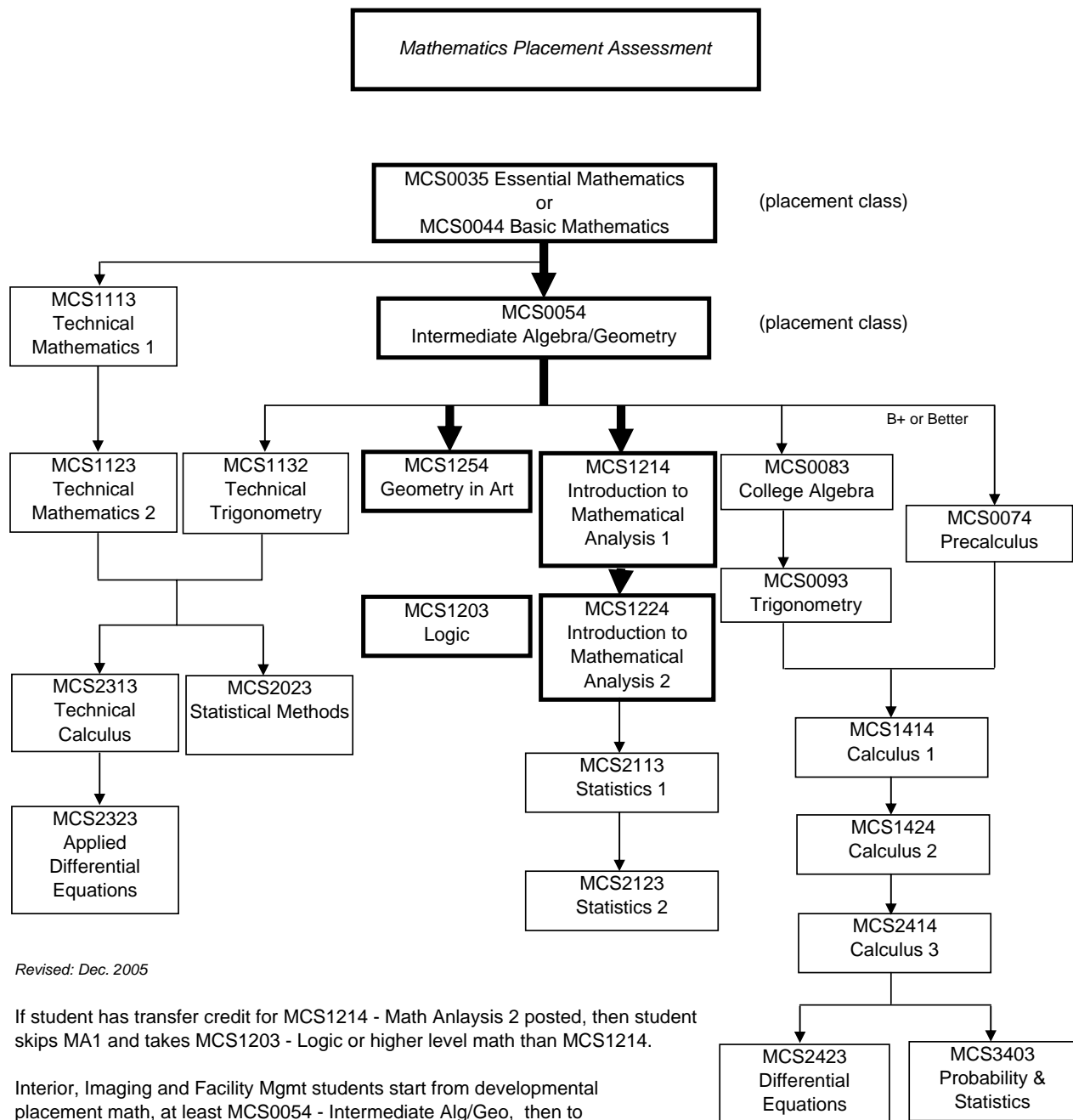


Mathematics Course Sequences



Revised: Dec. 2005

If student has transfer credit for MCS1214 - Math Analysis 2 posted, then student skips MA1 and takes MCS1203 - Logic or higher level math than MCS1214.

Interior, Imaging and Facility Mgmt students start from developmental placement math, at least MCS0054 - Intermediate Alg/Geo, then to Geometry in Art. They DO NOT take MA1 or Logic.