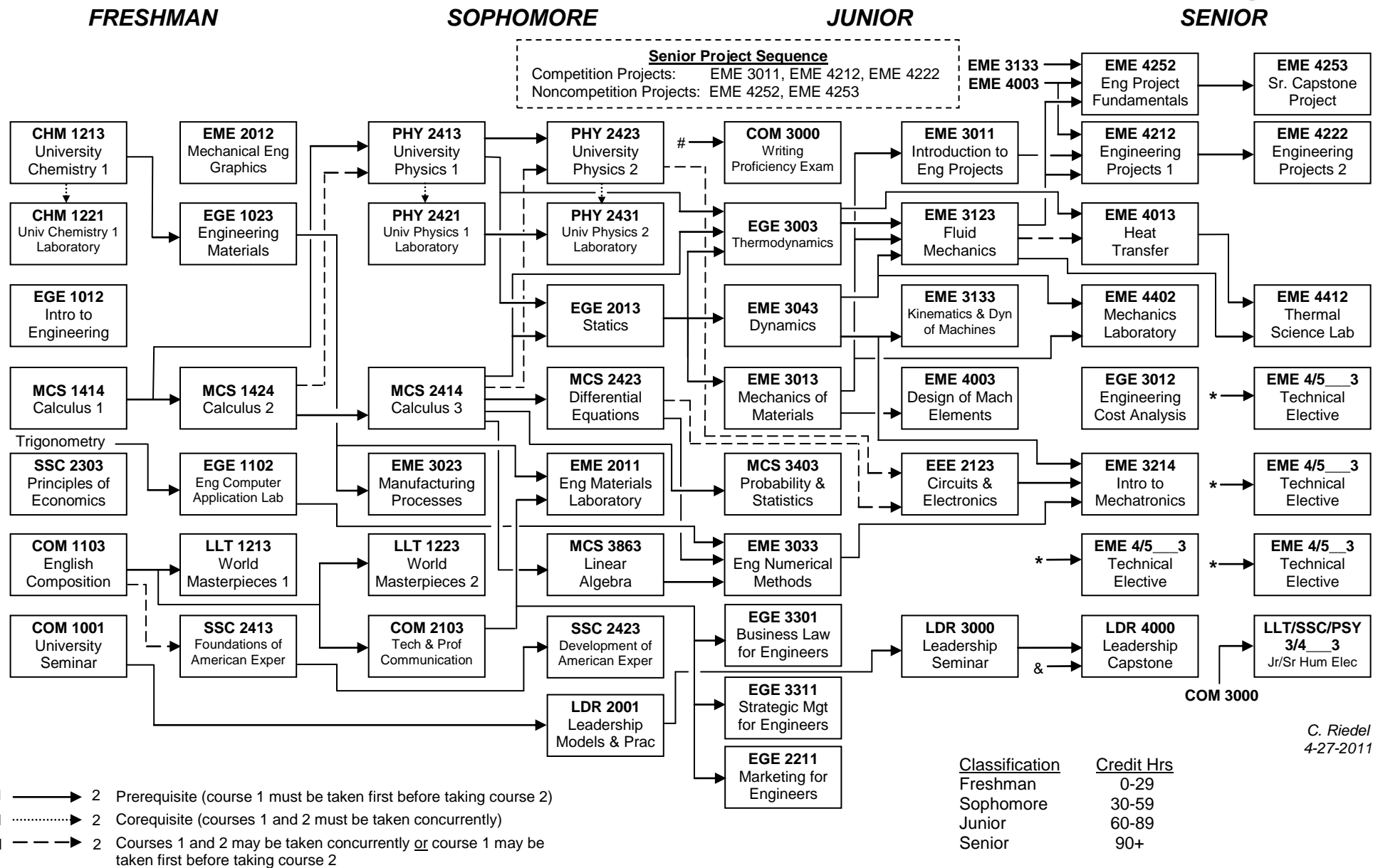


Bachelor of Science in Mechanical Engineering (BSME) Flowchart (Effective Fall 2011, 132 credit hours)



C. Riedel
4-27-2011

Take Jr/Sr Humanities Elective and Tech Electives early to avoid scheduling conflicts in Senior year.
 Freshman/Sophomore general education requirements (COM, LLT and SSC courses) must be completed before Junior year (60 credit hours) or you will be placed on probation.

* List of acceptable electives and corresponding prerequisites is available at the ME Department (E29).
 # Take exam when 60-80 credit hours have been completed.
 & Take any time during or after Senior Project Sequence.