

RECALIBRATING LENOVO BATTERIES

There are two methods for recalibrating a Lenovo Battery.

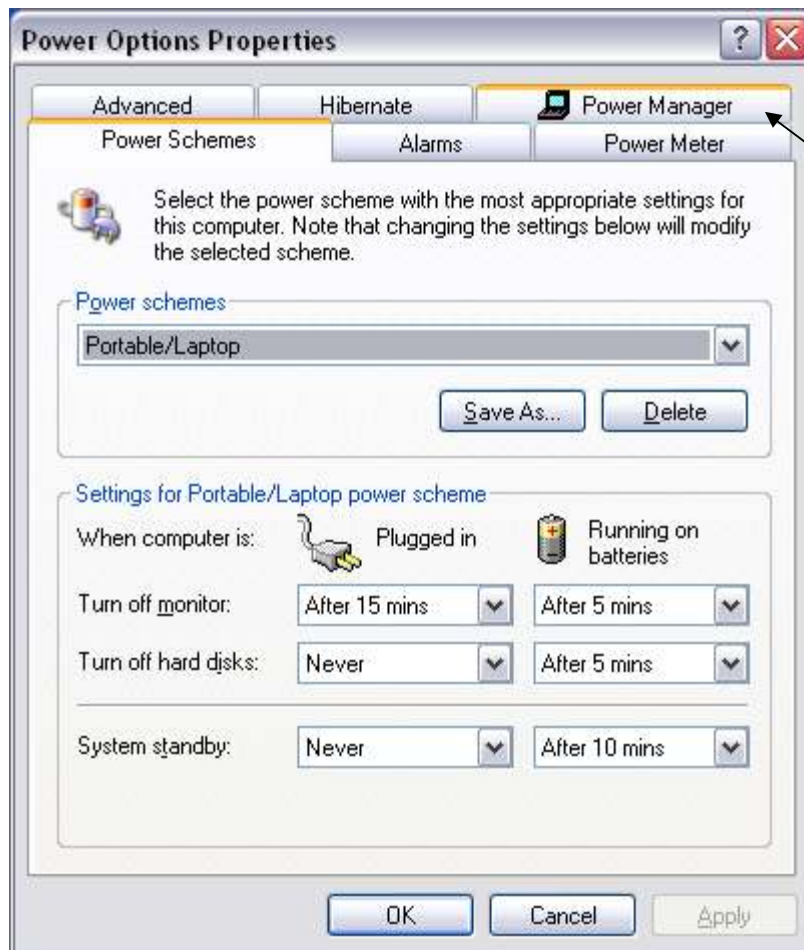
The easiest way is to fully charge and then fully discharge your battery. This must be done at least three times.

The second method is to perform a battery reset using the Lenovo Power Manager utility.

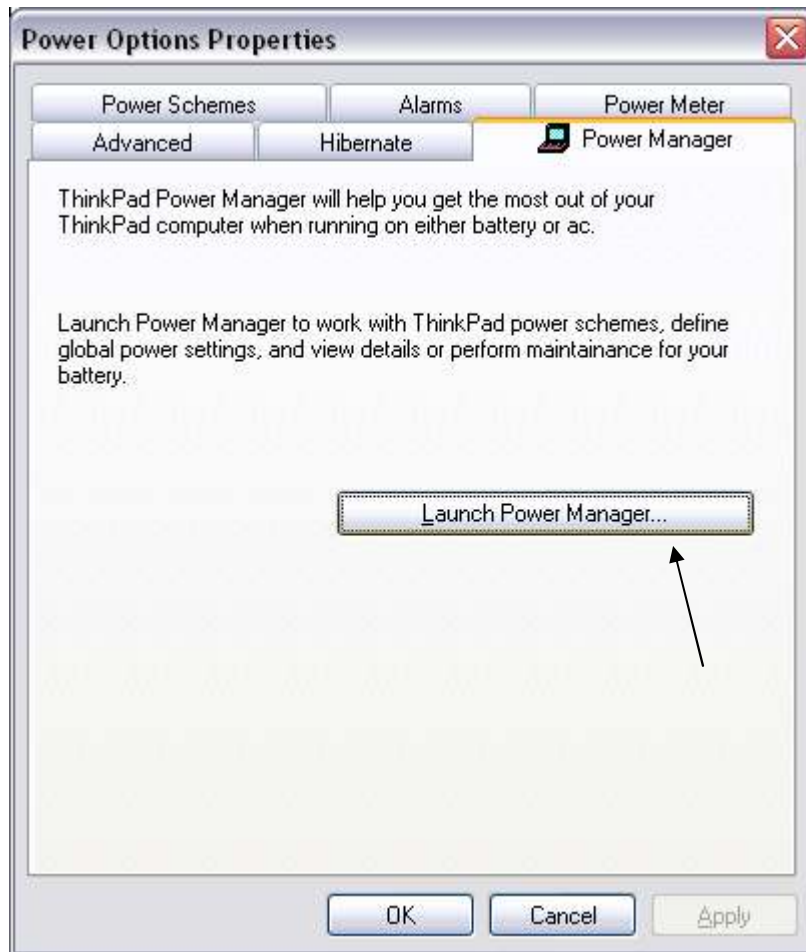
Once you perform either of these functions, you should have notably longer periods of battery usage.

Follow these steps to recalibrate your Lenovo Battery using the Power Manager utility:

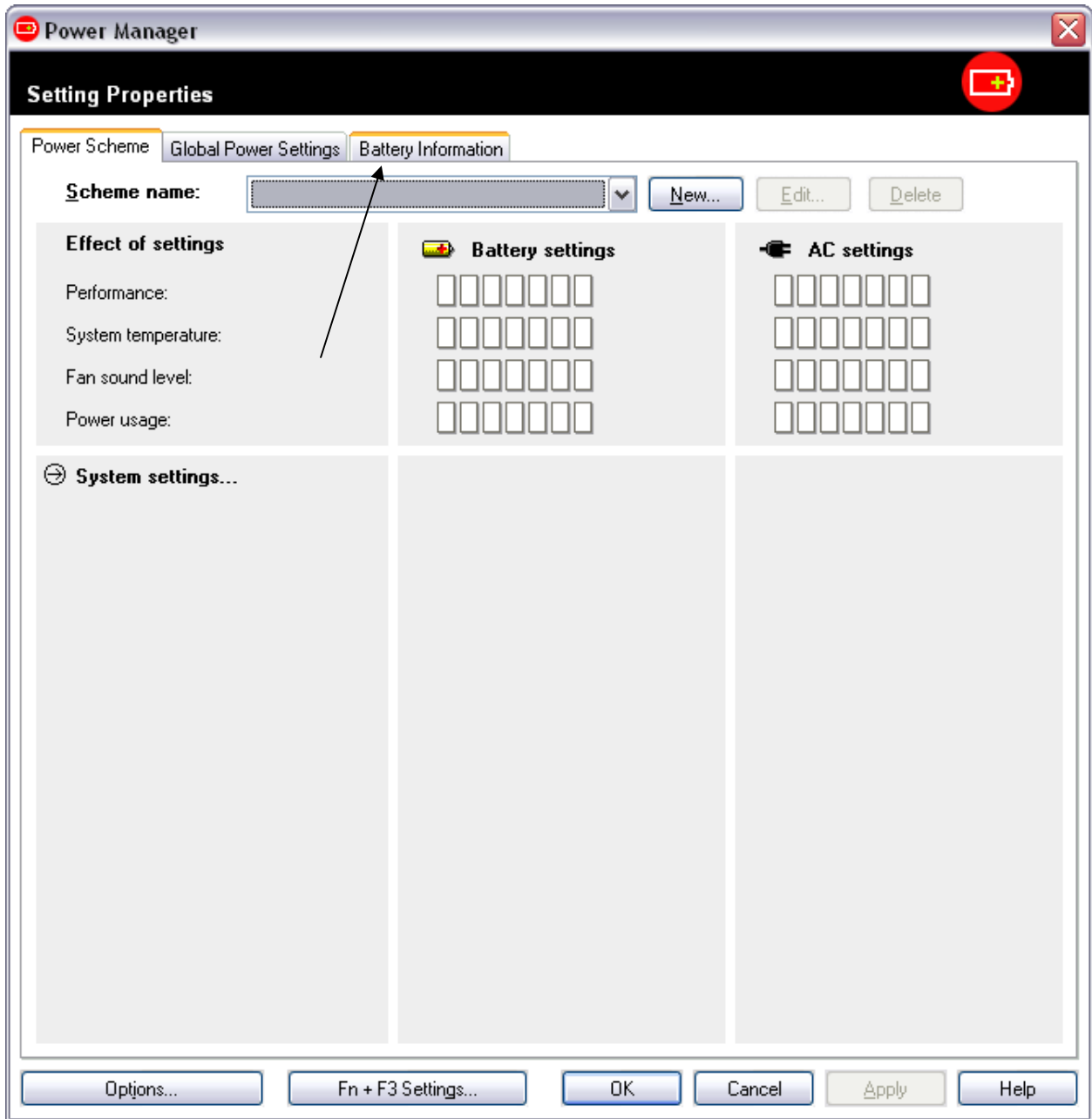
- 1) Click '**Start,**' then '**Control Panel,**' then '**Power Options**'
- 2) Click the '**Power Manager**' tab



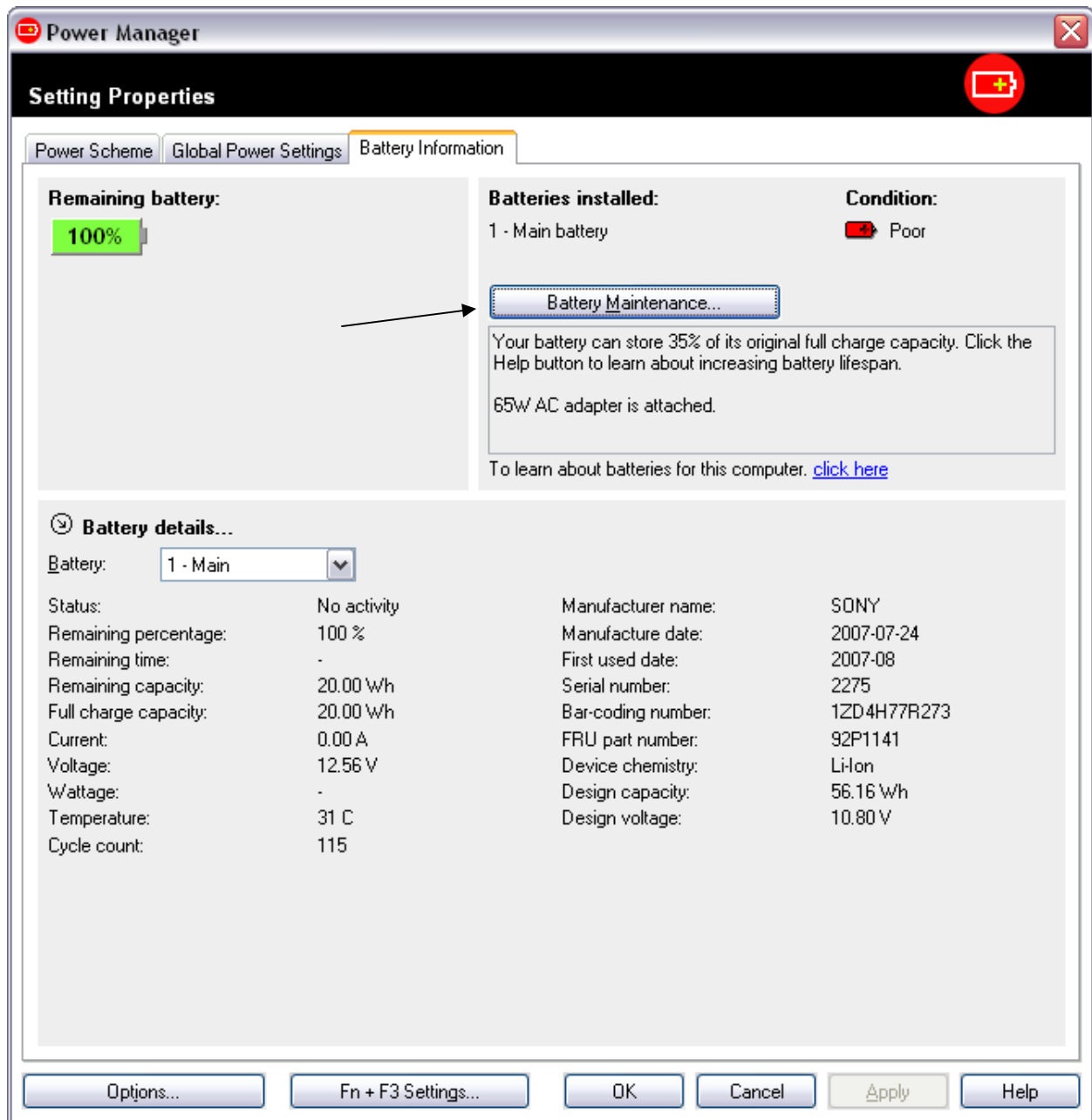
3) Click the **'Launch Power Manager'** button



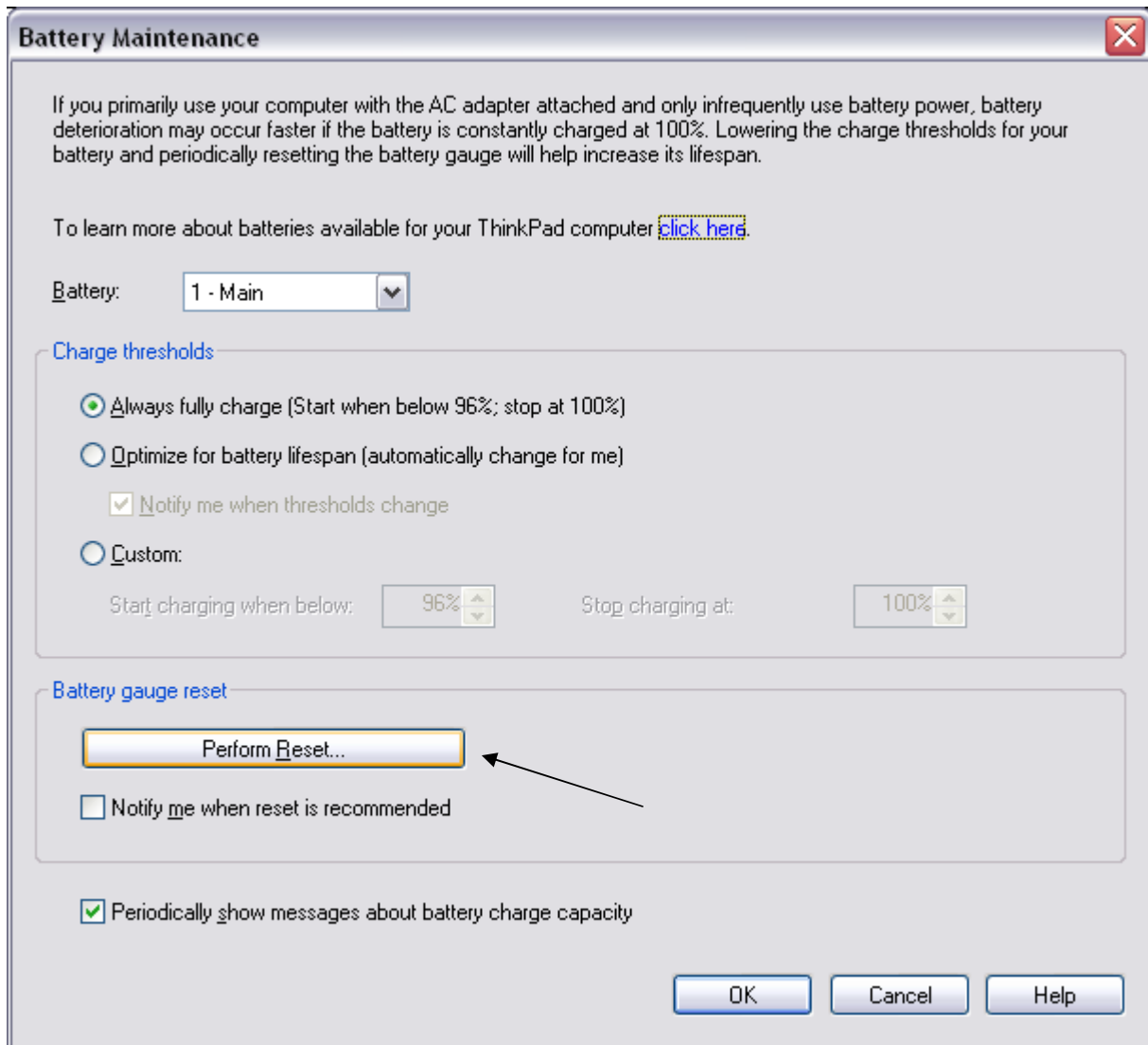
4) Click the **'Battery Information'** tab



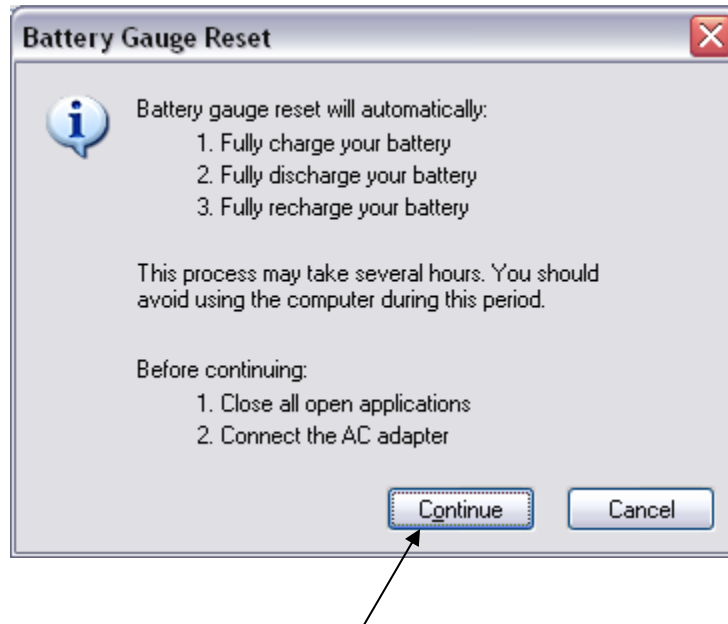
5) Click the **'Battery Maintenance'** button



6) Click the **'Perform Reset'** button in the Battery gauge reset section



7) Click the '**Continue**' button. This operation may take several hours so please allow enough time for this process to complete.



8) Click '**Ok.**' This will take you back to the Battery Information tab- here you may watch the progress of the reset. Do not disconnect the AC adapter until the reset is complete.