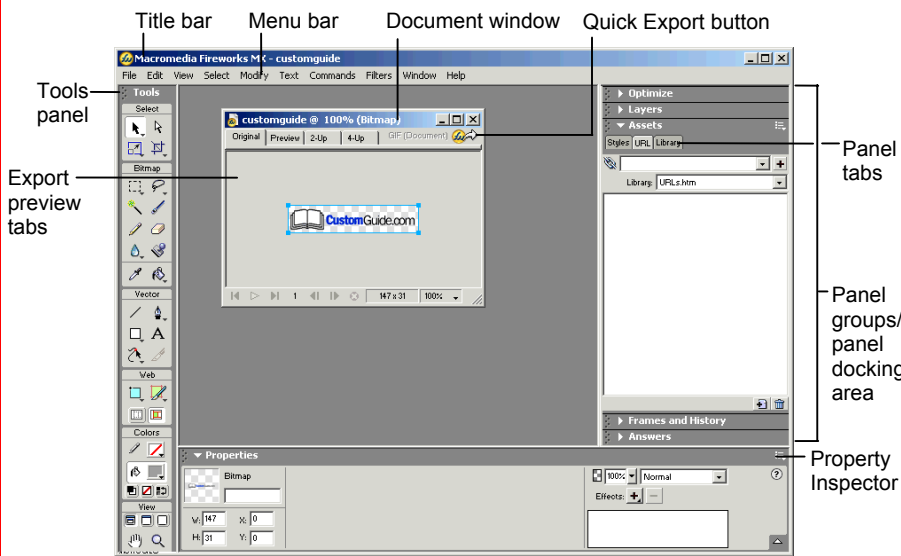


Macromedia®  
**Fireworks MX**  
 Quick Reference Card

**Fireworks MX Workspace**



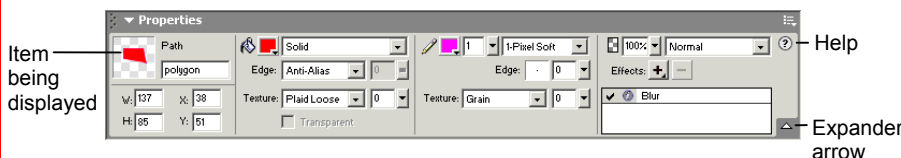
**Tools Panel**

- Pointer:** Select an entire object or pixel area
- Select Behind:** Selects objects behind other objects
- Scale:** Transform the object using these tools
- Skew** **Distort**
- Marquee:** Select a rectangular pixel area
- Oval Marquee:** Select an oval pixel area
- Magic Wand:** Select a pixel area of similar coloring
- Pencil:** Draw a freeform shape
- Blur:** Smooth edges
- Sharpen:** Focus edges
- Dodge:** Lighten pixels
- Burn:** Darken pixels
- Smudge:** Smear pixels
- Eyedropper:** Click the eyedropper cursor on the color you want to use
- Line:** Draw a line
- Rectangle:** Draw a rectangle or any of the shapes in this tool group
- Rounded Rectangle**
- Ellipse** **Polygon**
- Freeform:** Bend or reshape vector paths
- Reshape Area:** Distort or pull a vector path with the reshape area pointer
- Path Scrubber-additive or subtractive:** Increase or decrease the size of a stroke
- Rectangle Hotspot:** Draw hotspot shapes with this tool group
- Oval** **Polygon**
- Hand:** Click and drag to move around in the document
- Subselection:** Select points or objects within a group
- Crop:** Remove parts of an image
- Export Area:** Select an area of the image, and then export the selected area as its own file
- Lasso:** Select a freeform or polygon pixel area
- Polygon Lasso**
- Brush:** Paint a freeform shape
- Eraser:** Remove or color over pixels
- Rubber Stamper:** Duplicate areas of a bitmap image
- Paint Bucket:** Change the color of selected pixels or selected object
- Gradient:** Fill pixel area, vector, or text with gradient of colors
- Pen:** Place and connect points on the canvas to create an object
- Vector Path:** Draw freeform vector shapes
- Redraw Path:** Extend a path using the same characteristics
- Text:** Insert text in the document
- Knife:** Slice a path into two or more paths
- Slice:** Draw a rectangular or polygonal slice area with this group
- Polygon Slice**
- Zoom:** View the document close-up or far away

**Keyboard shortcuts**

Import	<Ctrl> + <R>	Show All	<Ctrl> + <Shift> + <L>
Export	<Ctrl> + <Shift> + <R>	Rulers	<Ctrl> + <Alt> + <R>
Export Preview	<Ctrl> + <Shift> + <X>	Show Grid	<Ctrl> + <Alt> + <G>
Duplicate	<Ctrl> + <Alt> + <D>	Snap to Grid	<Ctrl> + <Alt> + <Shift> + <G>
Clone	<Ctrl> + <Shift> + <D>	Hotspot	<Ctrl> + <Shift> + <U>
Paste Inside	<Ctrl> + <Shift> + <V>	Slice	<Alt> + <Shift> + <U>
Paste Attributes	<Ctrl> + <Alt> + <Shift> + <V>	Group	<Ctrl> + <G>
Zoom In	<Ctrl> + <=>	Ungroup	<Ctrl> + <Shift> + <G>
Zoom Out	<Ctrl> + <->	Hide/Show Panels	<F4>
Fit Selection	<Ctrl> + <Alt> + <O>	Preview in Primary Browser	<F12>
Fit All	<Ctrl> + <O>	Preview in Secondary Browser	<Ctrl> + <F12>
Full Display	<Ctrl> + <K>		
Hide Selection	<Ctrl> + <L>		

**Property Inspector**



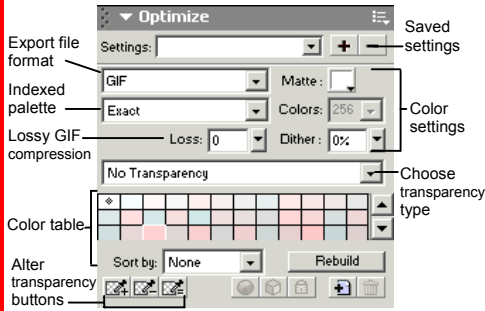
The **Property Inspector** displays detailed information about items in the Fireworks workspace.

- Select a vector object to view detailed information: ex. stroke or fill color, size, effects, texture,
- Open a document to view its properties: ex: file name and type, canvas size and color
- Select a tool to view the options available when using the tool: ex. color, style, size
- **To expand or contract the bottom half of the inspector:** Click the **Expander arrow** in the Property Inspector.

## Panels and Panel Groups

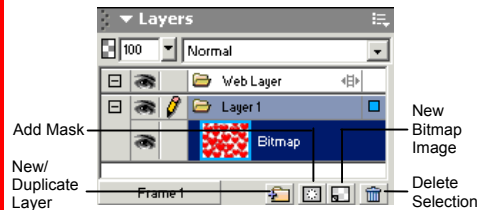
- **To View a Panel:** Select **Window** from the menu bar and select the panel you want to view. Or, click the title of the panel group, or click the expander arrow in panel group title bar.
- **To View More Options:** Click the panel's **Options menu**.
- **To Move, Dock, or Undock a Panel or Panel Group:** Drag the panel gripper (dotted area on the left side of the panel title bar) to a new location or docking area.

## Optimize Panel



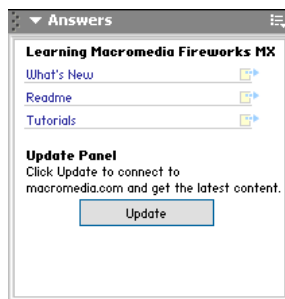
Optimize the image for the best-looking quality with the fastest download time.

## Layers Panel



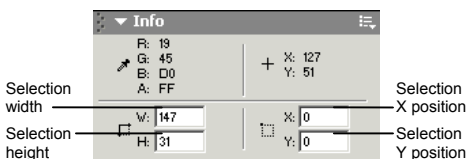
Add, delete, or edit layers, or insert objects in layers. Use layers to stack and organize objects.

## Answers Panel



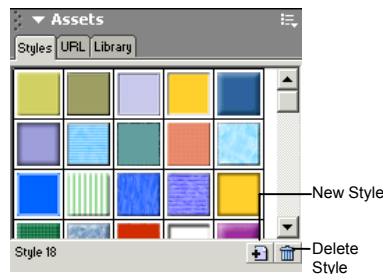
Connect to the Macromedia web site to learn about and access the most recent information about Fireworks.

## Info Panel

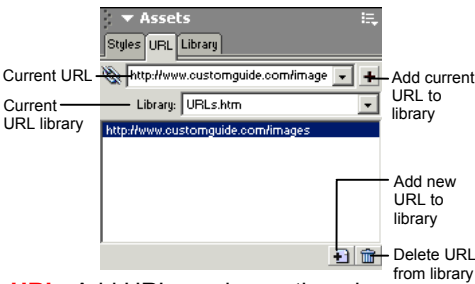


Find specific information for the selected object: size, location, and colors used in the object.

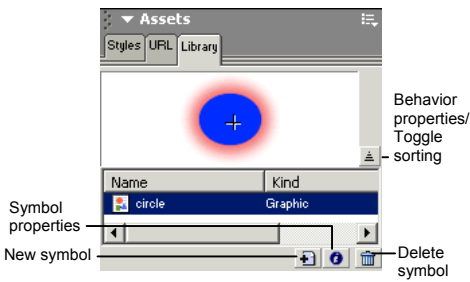
## Assets



**Styles:** Apply a predefined style to a selected object or text.

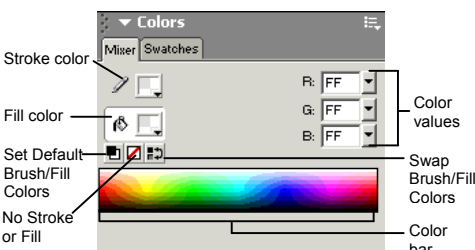


**URL:** Add URLs and save them in designated libraries so that you can reuse the URL easily.

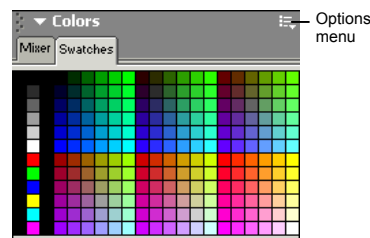


**Library:** Create symbols that you will use repeatedly in the document and add them to the library.

## Colors

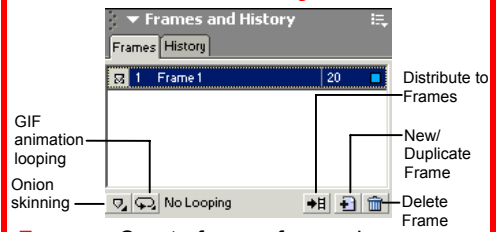


**Mixer:** Manage the colors used in the document; create a new color or choose to use a different color model in your document.

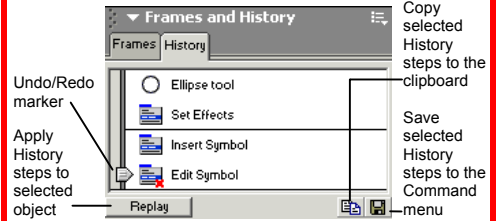


**Swatches:** Create a new swatch to create your own color scheme, or modify an existing swatch.

## Frames and History

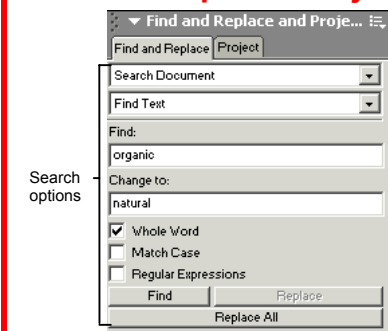


**Frames:** Create frames for use in animations or behaviors, such as a button rollover. Use with the Behaviors panel.

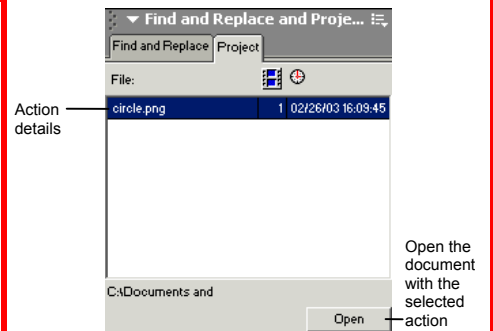


**History:** Move the slider to undo or redo previous actions, or copy or save selected steps for future use.

## Find and Replace/ Project Log

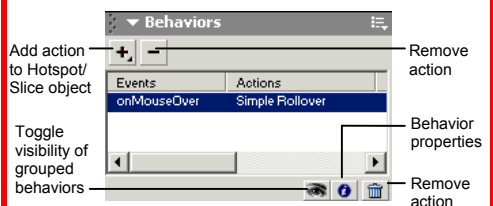


**Find and Replace:** Search and replace items such as colors, URLs, fonts and text.



**Project Log:** Helps keep track of find and replace actions in multiple files.

## Behaviors Panel



Apply animation to an object such as a rollover, swap image, or pop-up menu. Use with the Frames panel.