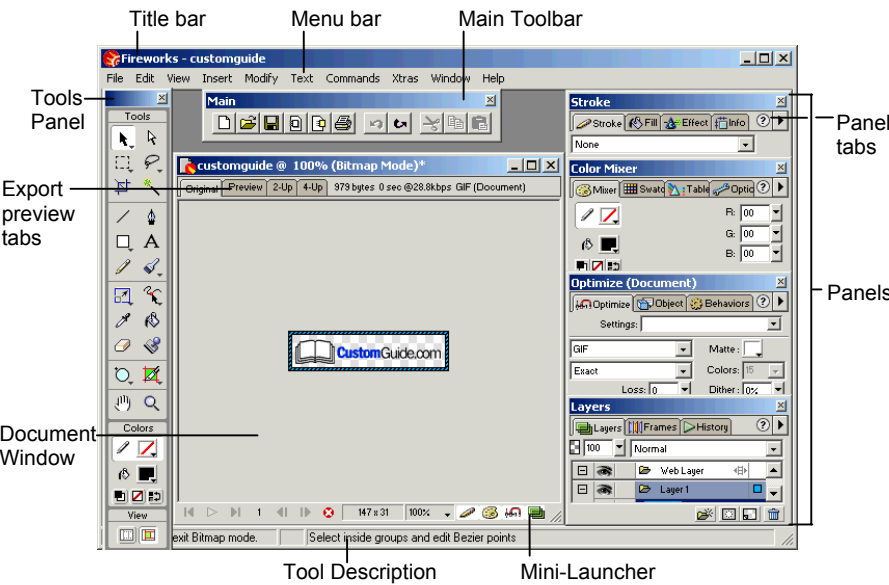


Fireworks 4 Workspace



Tools Panel

To Display a Tool Group: Click and hold down a tool with a small triangle in the lower-right corner of the button. Move the cursor to select another tool from the group.

*Use in bitmap mode.

**Use in vector mode.

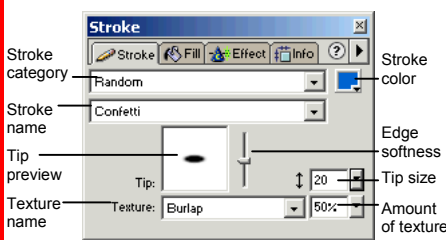
- Pointer:** Select an entire object or pixel area
- Select Behind:** Selects objects behind other objects
- Export Area:** Select and an area and export of the area as its own file
- Marquee*:** Select a rectangular pixel area
- Oval Marquee*:** Select an oval pixel area
- Crop:** Remove parts of an image
- Line:** Draw a line
- Rectangle:** Draw a rectangle or any of the shapes in this tool group
- Rounded Rectangle**
- Ellipse**
- Polygon**
- Pencil:** Draw a freeform shape like you would with pencil and paper
- Scale**:** Transform the object using this tool group
- Skew**
- Distort**
- Eyedropper:** Select an object and lift the color you want to apply to the object
- Knife**:** Slice a path into two or more paths
- Eraser*:** Remove or color over pixels
- Rectangle Hotspot:** Apply hotspot shapes on images with this tool group
- Oval Hotspot**
- Polygon Hotspot**
- Hand:** Click and drag to move around in the document
- Subselection:** Select points or objects within a group
- Lasso*:** Select a freeform or polygon pixel area with this tool group
- Polygon Lasso***
- Magic Wand*:** Select a pixel area of similar coloring
- Pen:** Place and connect points on the canvas to create an object
- Text:** Insert text in the document
- Brush:** Paint a freeform shape
- Redraw Path**:** Use the selected path's properties to redraw part of it
- Freeform**:** Bend or reshape vector paths
- Reshape Area**:** Distort or pull all the path within the reshape area pointer
- Path Scrubber-additive:** Increase the size of a stroke
- Path Scrubber-subtractive:** Decrease the size of a stroke
- Paint Bucket:** Change the color of selected object
- Rubber Stamper*:** Duplicate areas of a bitmap image
- Slice**:** Draw a rectangular or polygonal slice area
- Polygon Slice****
- Zoom:** View the document close-up or far away

Keyboard shortcuts

Import	<Ctrl> + <R>	Show All	<Ctrl> + <Shift> + <L>
Export	<Ctrl> + <Shift> + <R>	Rulers	<Ctrl> + <Alt> + <R>
Export Preview	<Ctrl> + <Shift> + <X>	Show Grid	<Ctrl> + <Alt> + <G>
Duplicate	<Ctrl> + <Alt> + <D>	Snap to Grid	<Ctrl> + <Alt> + <Shift> + <G>
Clone	<Ctrl> + <Shift> + <D>	Hotspot	<Ctrl> + <Shift> + <U>
Paste Inside	<Ctrl> + <Shift> + <V>	Slice	<Alt> + <Shift> + <U>
Paste Attributes	<Ctrl> + <Alt> + <Shift> + <V>	Group	<Ctrl> + <G>
Zoom In	<Ctrl> + <=>	Ungroup	<Ctrl> + <Shift> + <G>
Zoom Out	<Ctrl> + <->	Hide/Show Panels	<F4>
Fit Selection	<Ctrl> + <Alt> + <O>	Preview in Primary Browser	<F12>
Fit All	<Ctrl> + <O>	Preview in Secondary Browser	<Ctrl> + <F12>
Full Display	<Ctrl> + <K>		
Hide Selection	<Ctrl> + <L>		

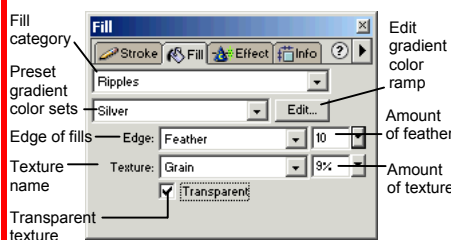
Panels

Stroke Panel



Format and enhance a selected line or object border with various stroke types, widths, and colors.

Fill Panel

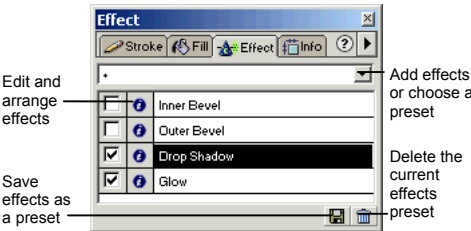


Format and enhance a selected object's fill with various fill types, colors, and textures.

Panels (continued)

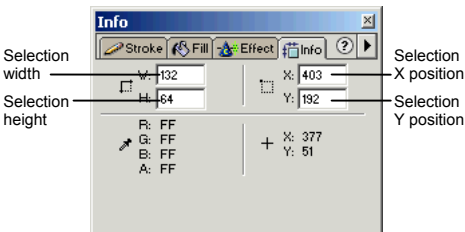
- **To View a Panel:** Select **Window** from the menu bar and select the panel you want to view.
- **To View More Options:** Click the panel's **Options menu**.
- **To Get Help:** Click the **Help button** for more information on the panel.

Effect Panel



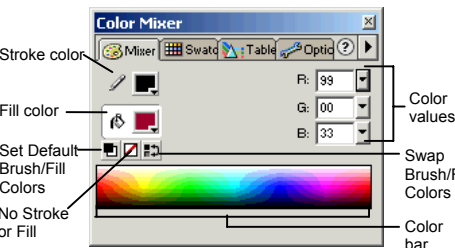
Apply an effect to a selected object, such as glow, shadow, or bevel. Edit the effects to change its properties. Or, create and use a preset collection of pre-formatted effects.

Info Panel



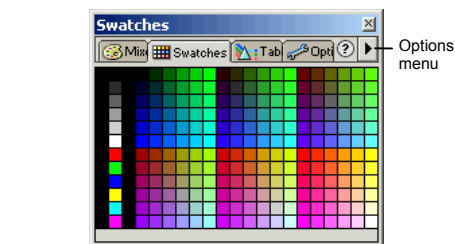
Find specific information for the selected object: size, location, and colors used in the object. Enter exact location coordinates on the canvas or enter the exact height and width of the object in pixels.

Color Mixer Panel



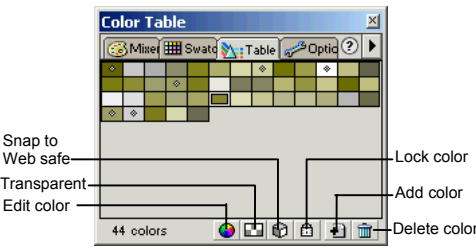
Create a new color or choose to use a different color model in your document.

Swatches Panel



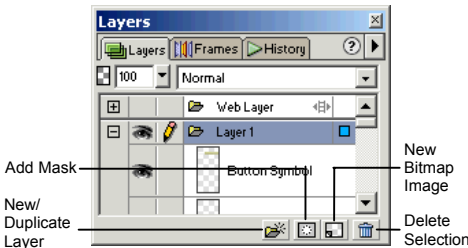
Create a new swatch to create your own color scheme or modify an existing swatch.

Tables Panel



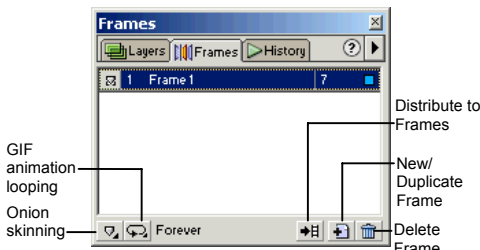
Compile all the colors in an image, or edit colors in the image.

Layers Panel



Add, delete, or edit layers, or insert objects in layers. Use layers to stack and organize objects in the image.

Frames Panel



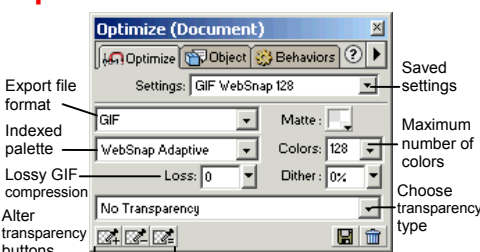
Create frames for use in animations or behaviors, such as rollover buttons.

History Panel



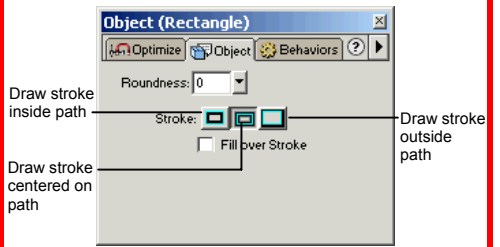
Undo or redo previous actions, or copy or save selected steps for future use.

Optimize Panel



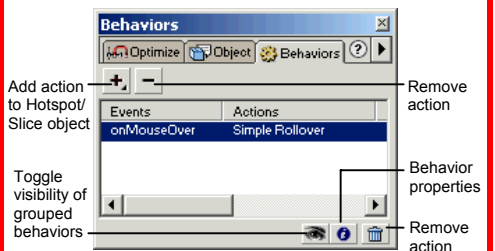
Optimize the image for the best-looking quality with the fastest download time.

Object Panel



Adjust an object's properties.

Behaviors Panel



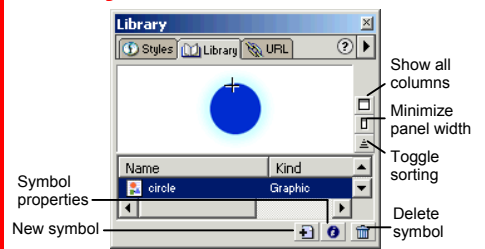
Apply animations to an object such as a rollover, swap image, or pop-up menu.

Styles Panel



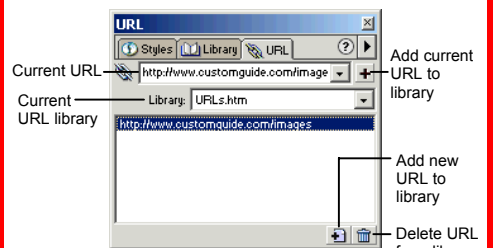
Apply a predefined style to a selected object or text.

Library Panel



Create and add symbols to the library that you will use repeatedly in the document.

URL Panel



Assign a Web address to text or images. The URL panel stores the address for easy access in the future.