



Documentation for using the LTU VPN Service

This Document explains how to set up your laptop or desktop to connect to LTU network resources using the Lawrence Tech VPN Service.

Instructions for users with Microsoft Windows XP: Pages 2-11

Instructions for users with Microsoft Vista: Pages 12-18

LTU VPN Instructions for Windows XP users.

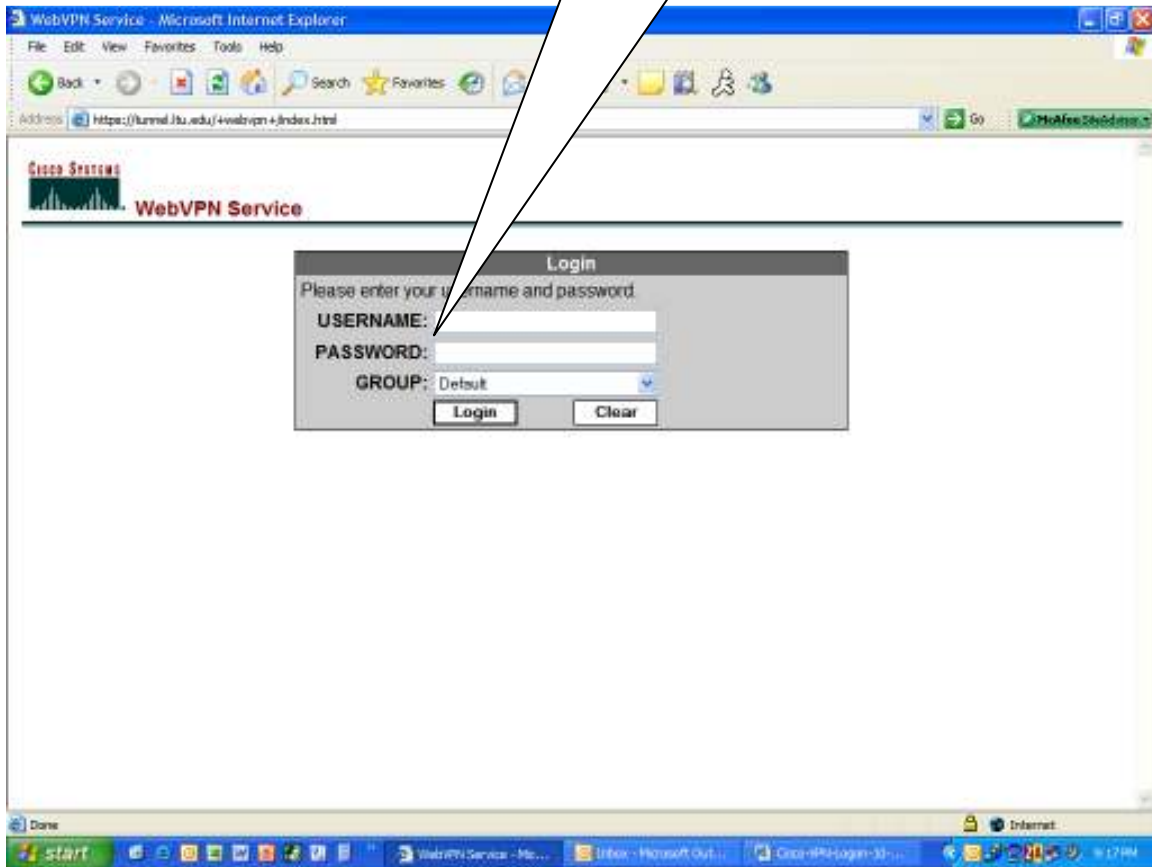
1. Logging into the LTU VPN Service

From a browser screen type in <https://tunnel.ltu.edu> and press “enter”.

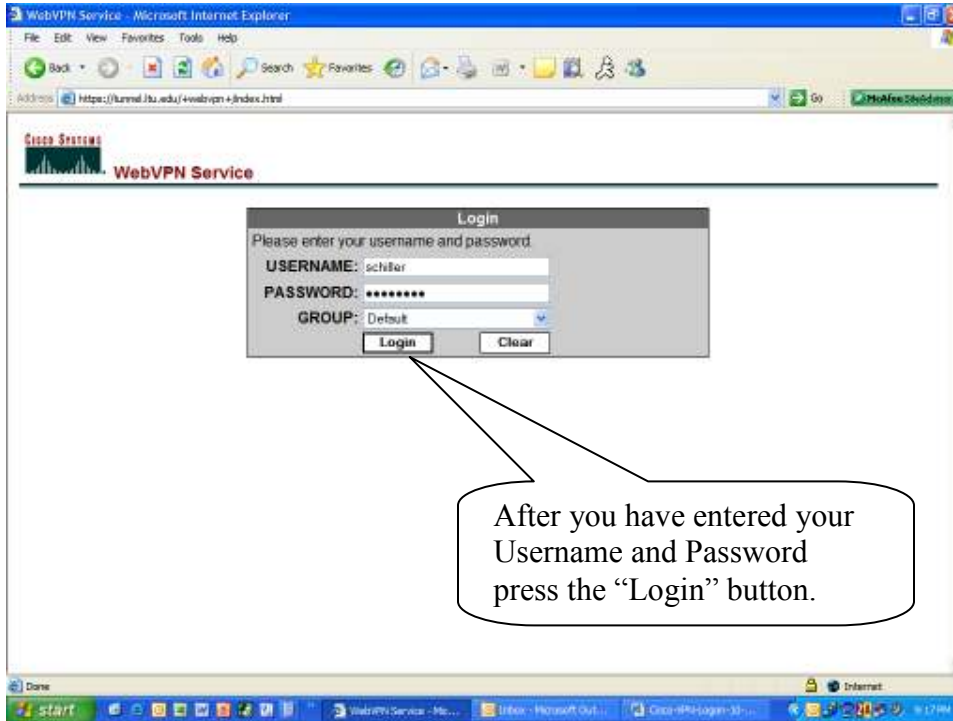


2. Enter your LTU Network Username and Password

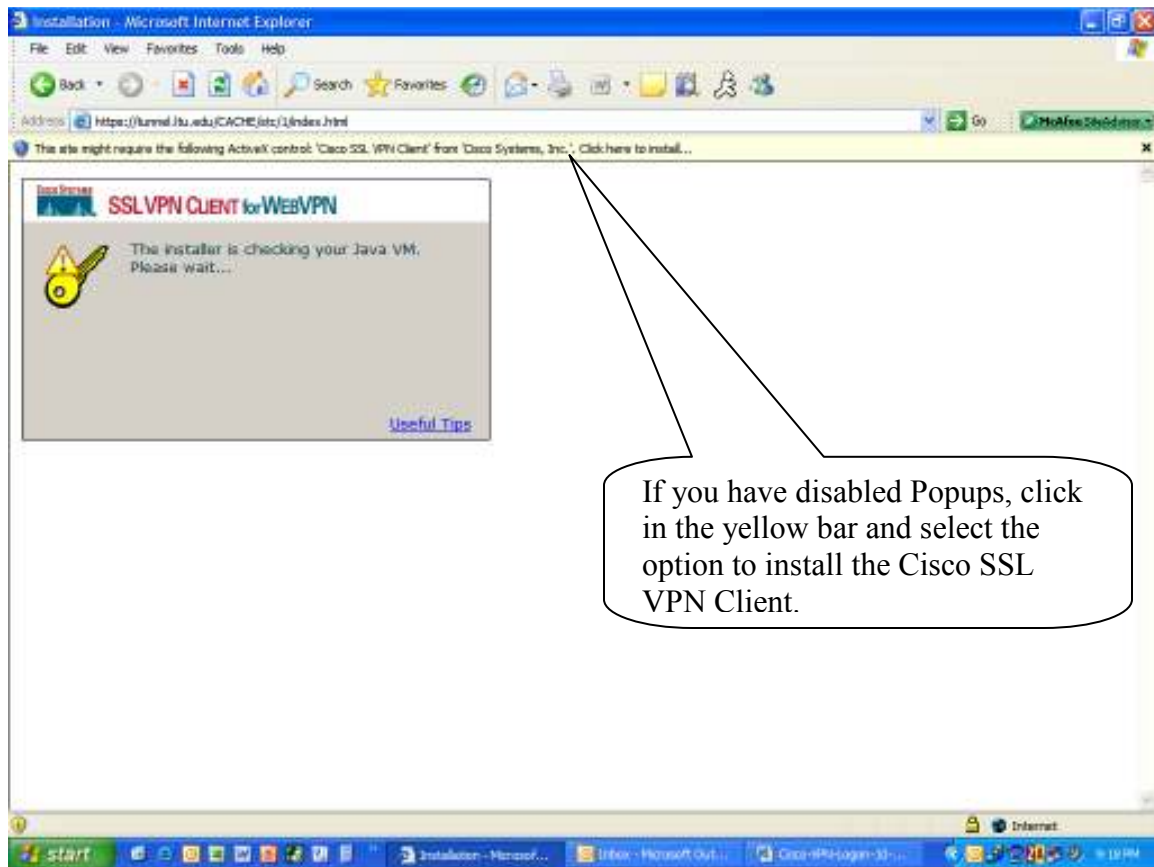
Enter your LTU Network login Username and Password in these fields. Do not change the information in the Group field (Keep Group: Default).



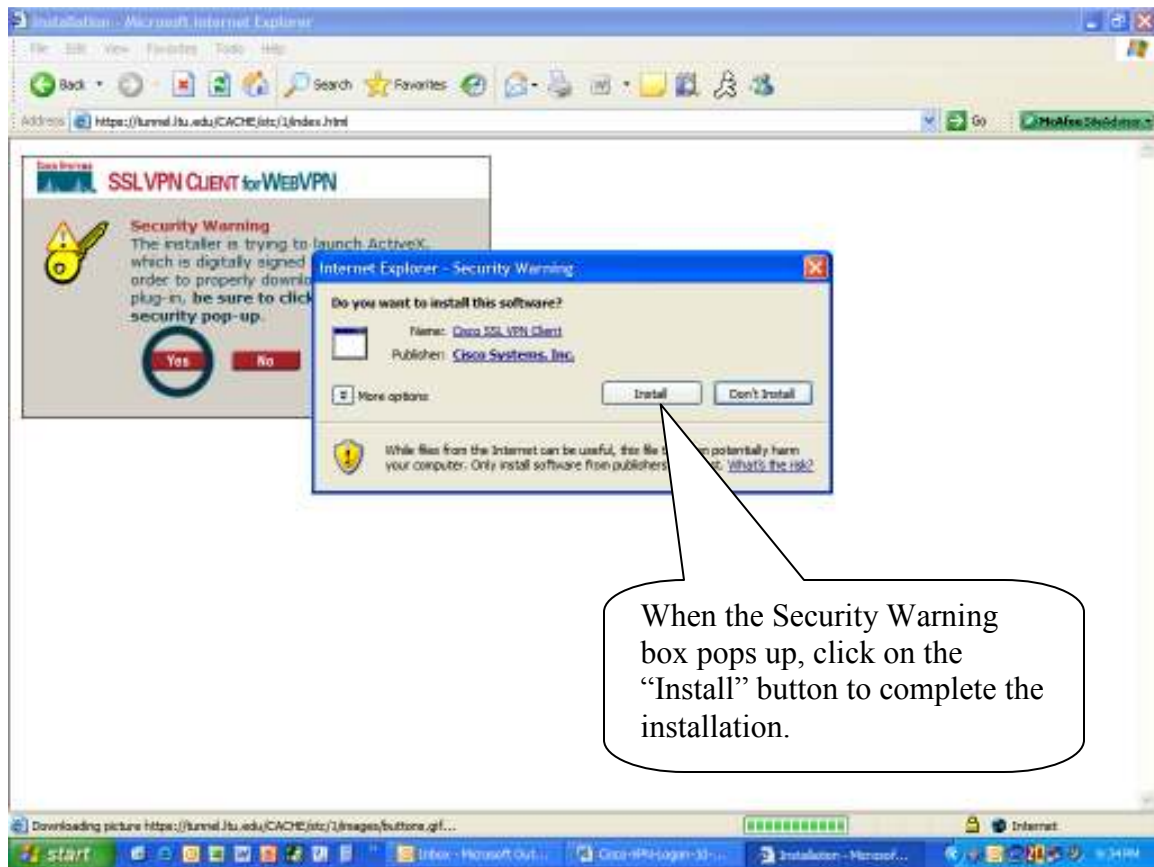
3. Completing the Login Process



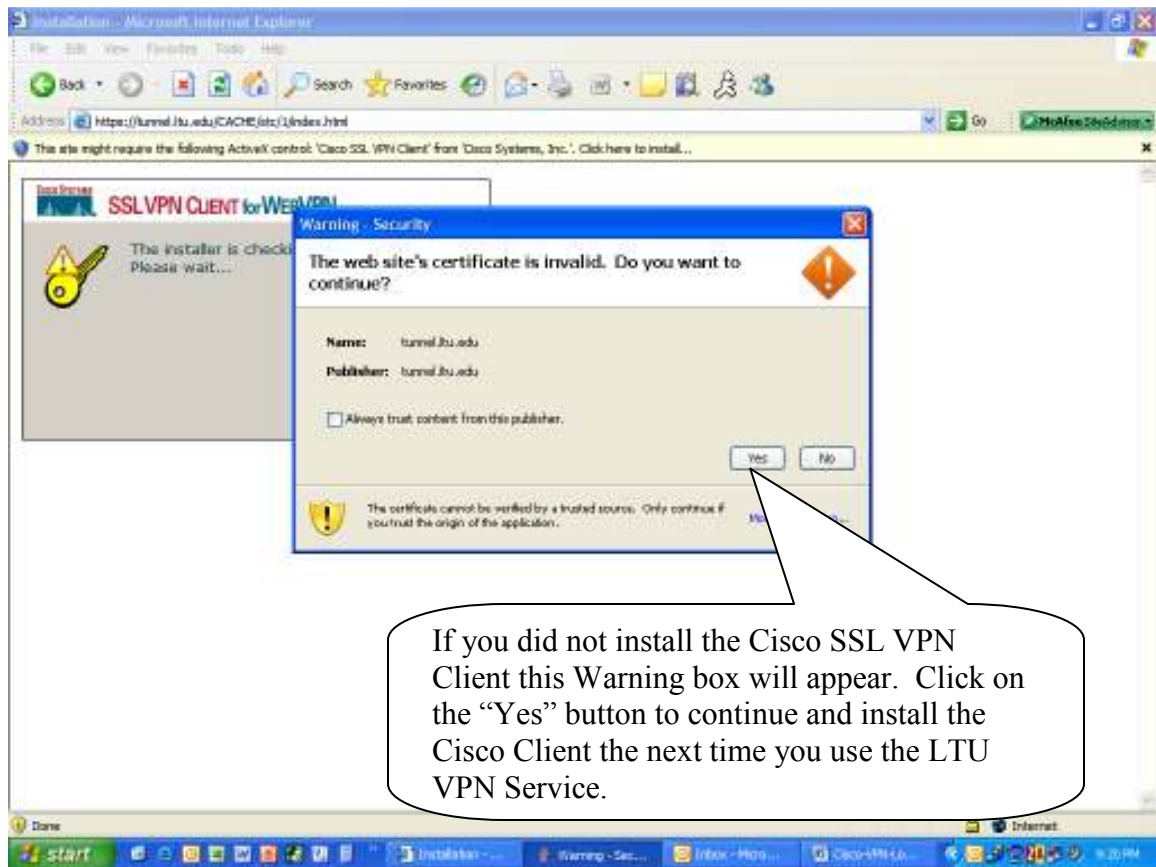
4. Start Installation of the Cisco VPN Client



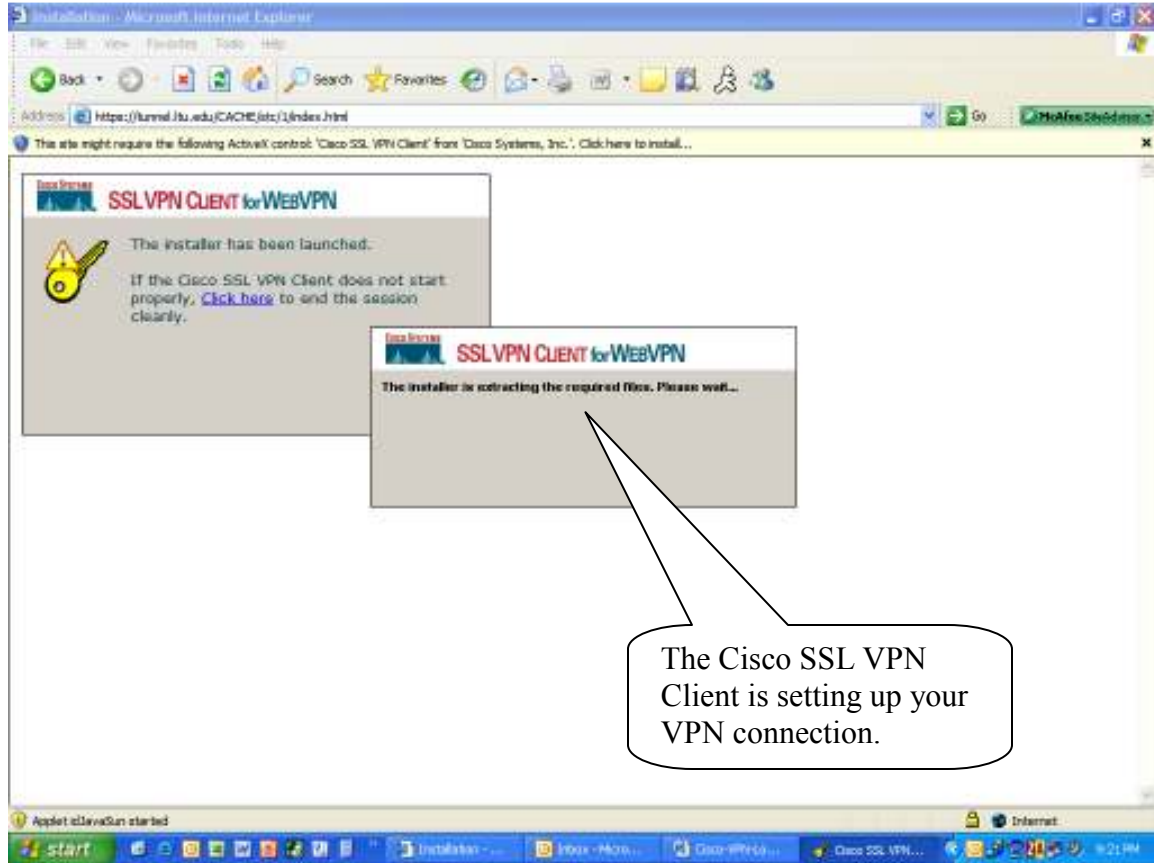
5. Finishing the Cisco Client Installation



6. If you did not install the Cisco SSL VPN Client



7. The Cisco SSL VPN Client being Setup



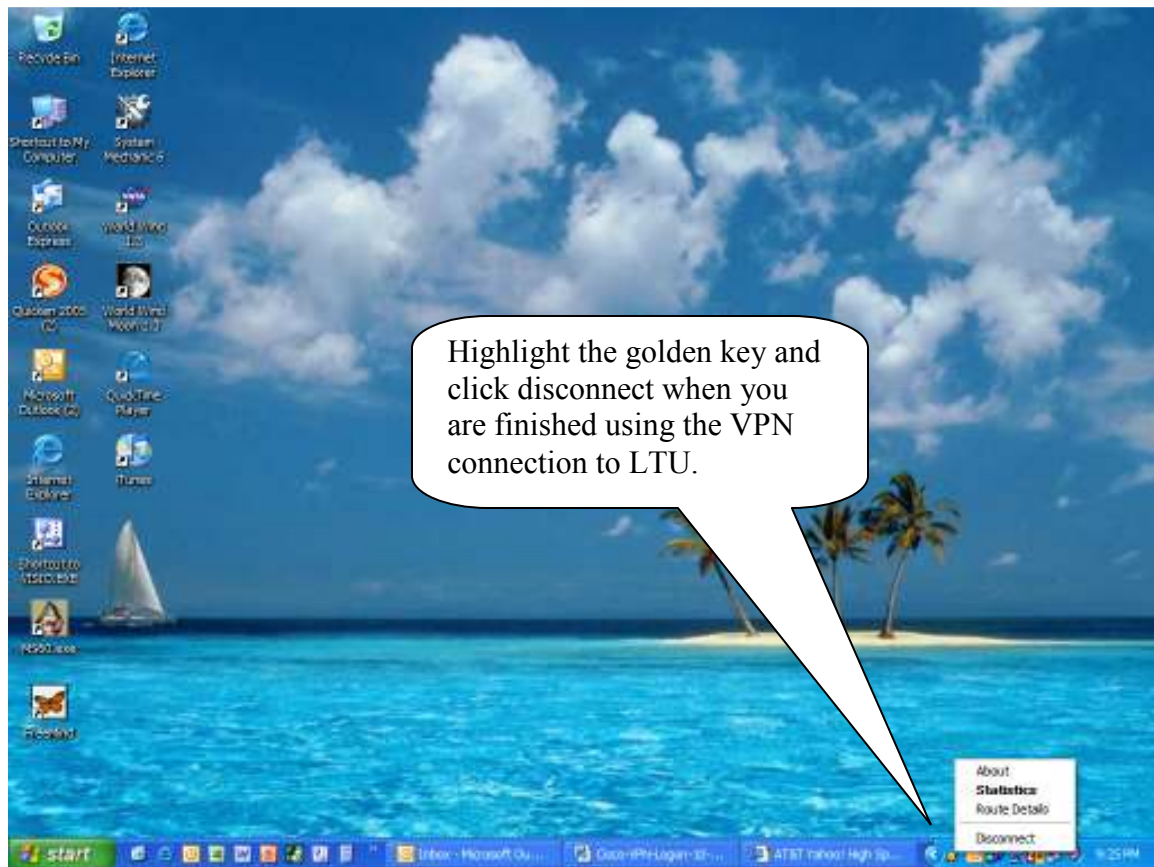
8. The SSL VPN Connection is established

The web browser you established a connection with is closed and a “Golden Key” is in the System Tray in the lower right corner.

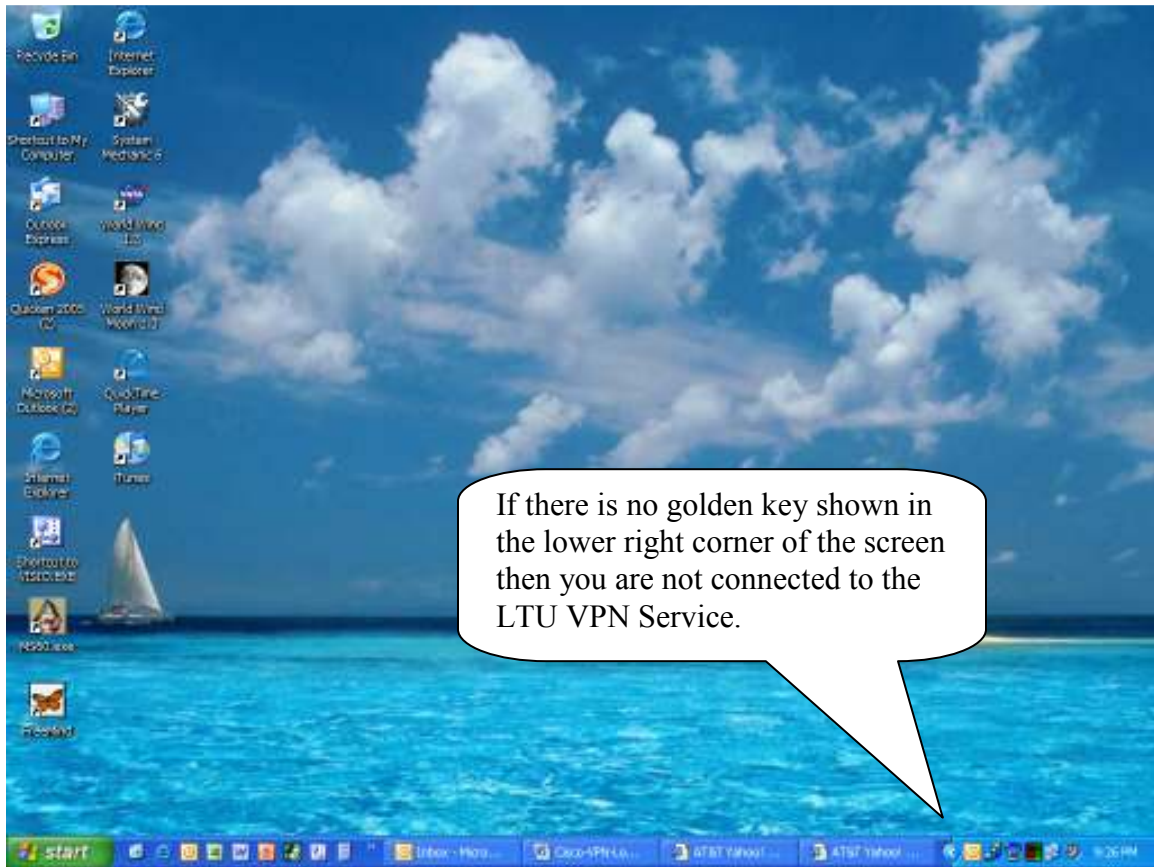


You are now connected to the LTU Campus Network, just as if you were in one of the buildings on the Southfield campus.

9. How to Disconnect



10. Now you are not connected to the LTU VPN Service



LTU VPN Instructions for Vista Users

1. In IE browser window, type in <https://tunnel.ltu.edu>, then enter your username and password to login.



2. Cisco AnyConnect VPN Client installation will start. Click **OK** on the VPN Client Downloader window.



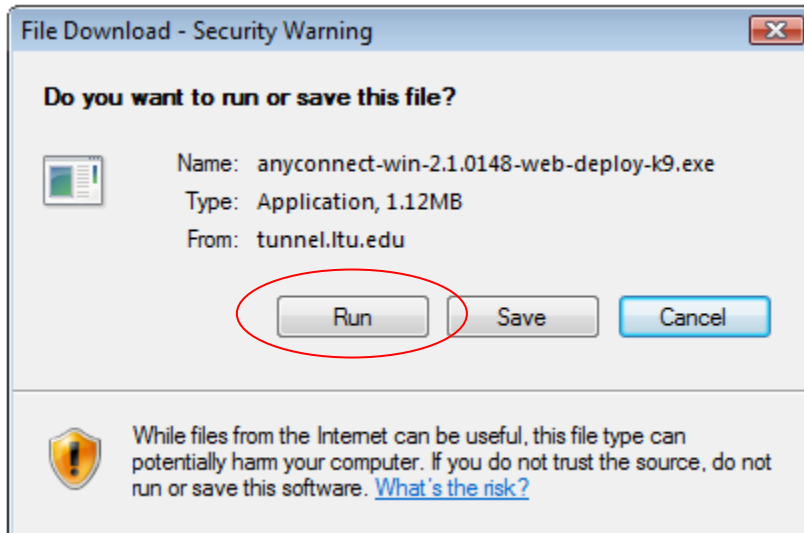
3. Click **Download**.



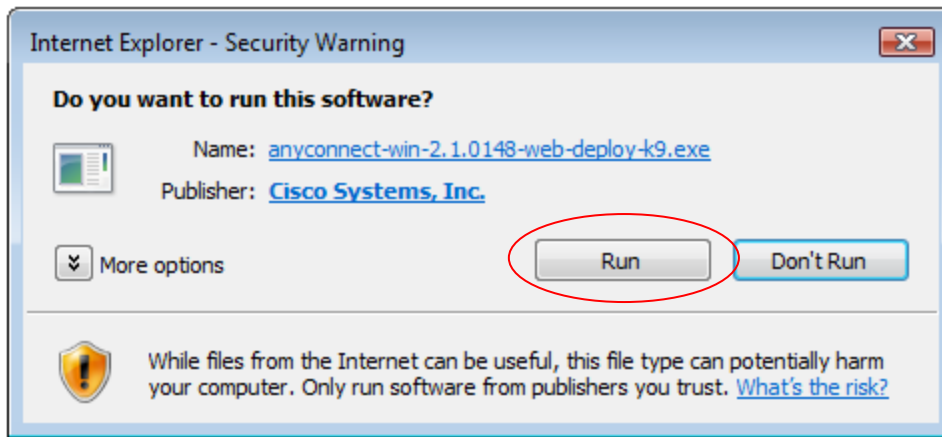
4. Click **Windows Vista/64/XP/2000**.



5. Click **Run**.

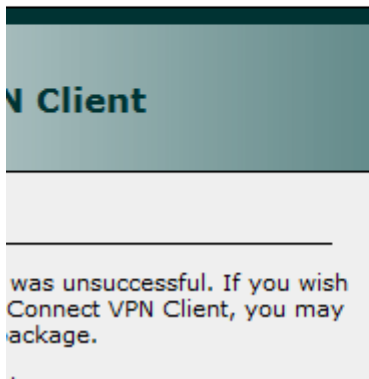
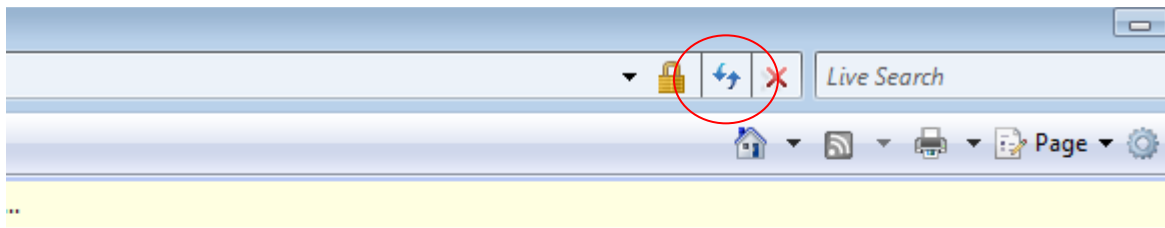


6. Click **Run** again.

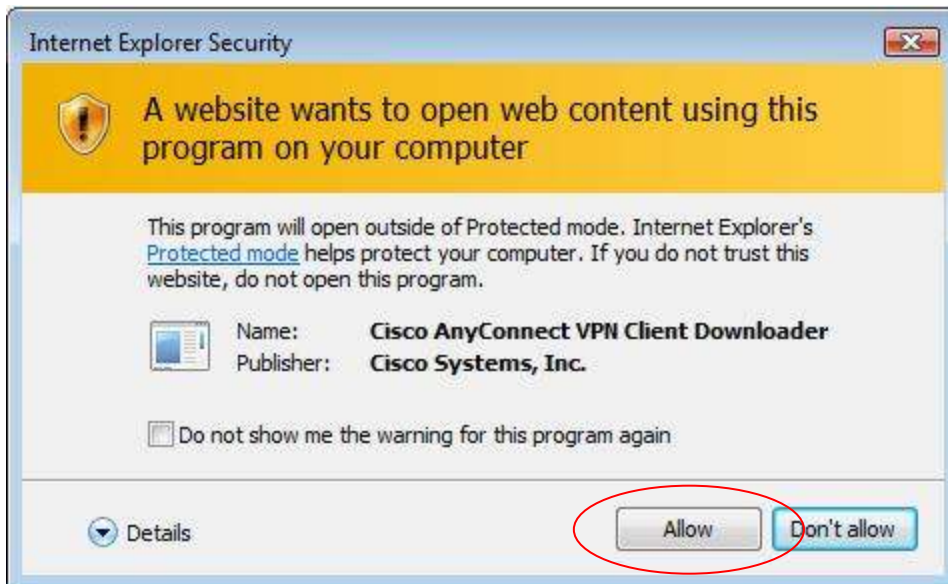


The Cisco AnyConnect VPN Client Setup will start. Follow the setup screens until the installation is done (A user account control window will pop up in which you have to click **Allow**).

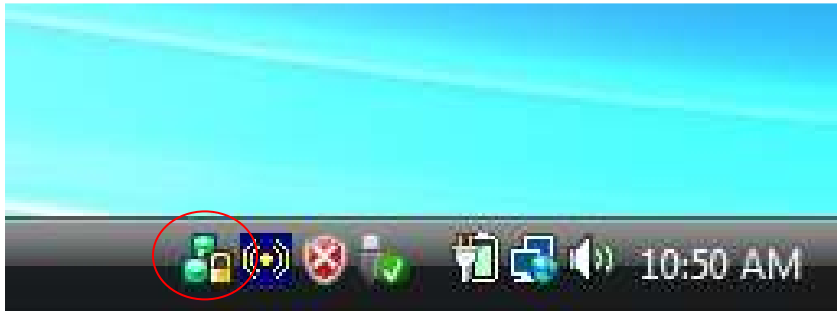
7. Refresh the IE windows.



8. Click **Allow** in the security window.



The connection will be established and a small icon will be placed on the taskbar notification area.



9. To disconnect, right-click on the VPN connection icon and select **Disconnect**.



10. To reconnect, go to Start → Programs → Cisco → AnyConnect VPN Client → AnyConnect VPN Client

