

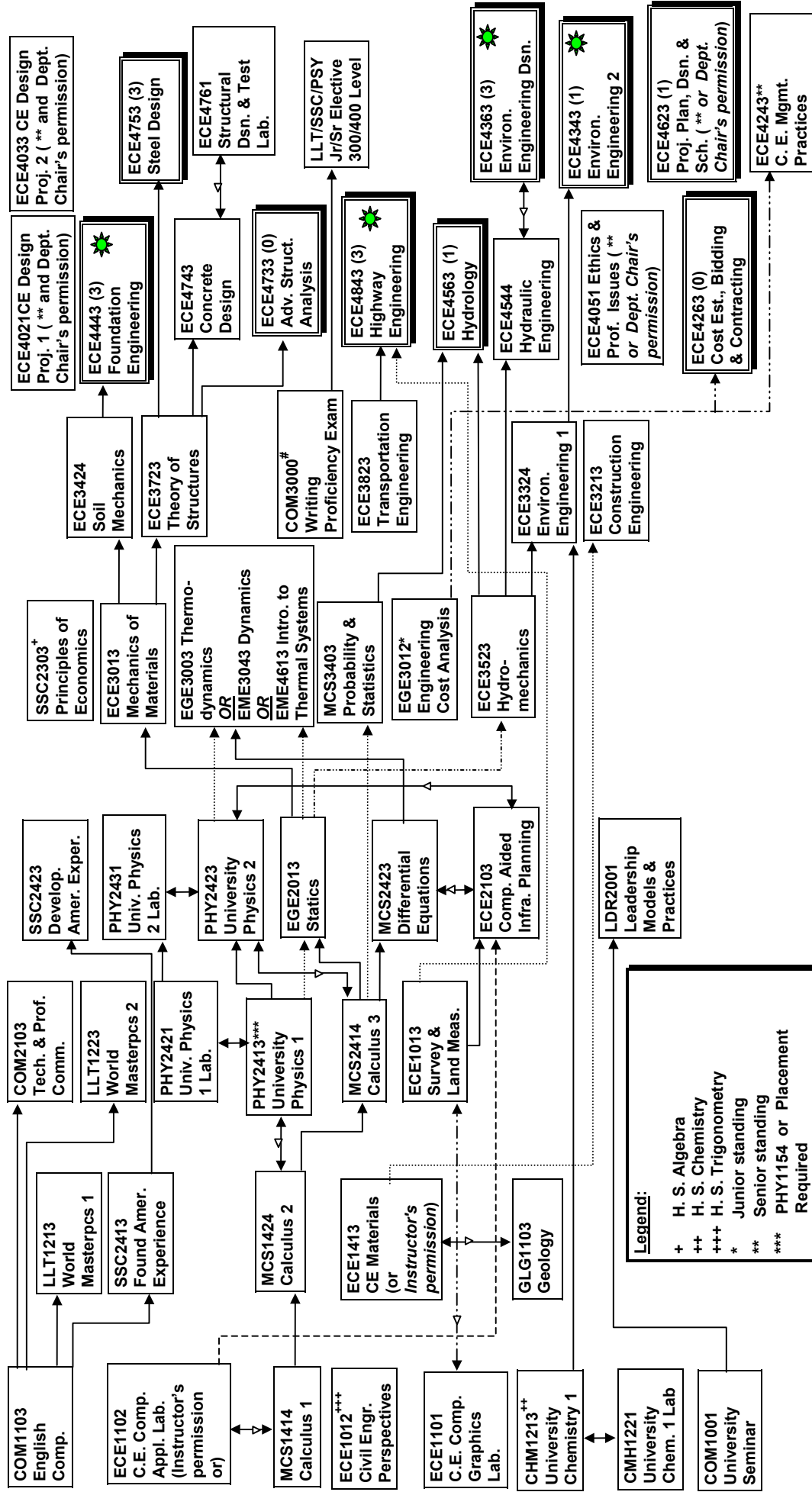
LAWRENCE TECHNOLOGICAL UNIVERSITY
Civil Engineering Curriculum (132 credits) 2008-2009

Freshman Year

Sophomore Year

Junior Year

Senior Year



Semester Hours:

Freshman	0 - 29
Sophomore	30 - 59
Junior	60 - 89
Senior	≥ 90

Legend:

- + H. S. Algebra
- ++ H. S. Chemistry
- +++ H. S. Trigonometry
- * Junior standing
- ** Senior standing
- *** PHY1154 or Placement Required
- # Take exam on completion of 55-80 credit hrs.
- (3) Design credits = 3
- 1 ←→ 2 Course 2 may be taken concurrently with 1 (or Course 1 may be taken without 2)
- 1 ↔ 2 Courses 1 & 2 must be taken concurrently

Technical Elective (TE) Courses Criteria:

- (a) TE courses are indicated by Shadow Boxes. Select Four TE courses that will give a Total TE Credits of at least 12.
- (b) The selected Four TE courses must also have a Total Design Credits equal to or exceed 7. Design credits are indicated by the number in (...) beside each TE course.
- (c) The selected Four TE courses must have at least one course with the icon ★