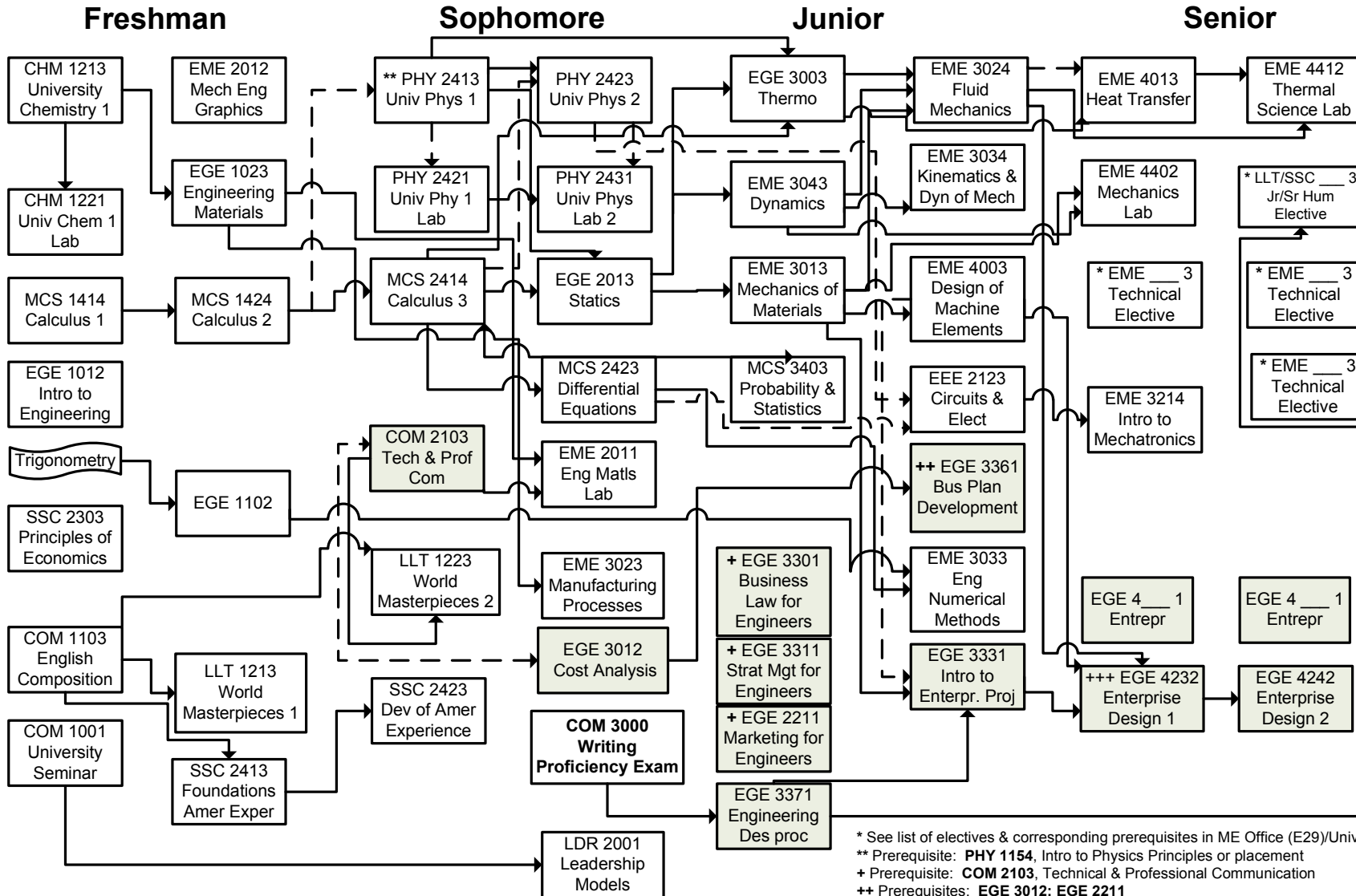


Name: _____ ID #: _____

Bachelor of Science in Mechanical Engineering with Entrepreneurial Certificate (effective fall 2008)



* See list of electives & corresponding prerequisites in ME Office (E29)/University Catalog

** Prerequisite: **PHY 1154**, Intro to Physics Principles or placement

+ Prerequisite: **COM 2103**, Technical & Professional Communication

++ Prerequisites: **EGE 3012; EGE 2211**

+++ Prerequisites **EGE 3301; 3311; 2211; EME 3024; 4003**

NOTE:

1. Fresh/Soph general education requirements must be completed before junior year (60+ credits) or you will be placed on probation. Recommendation: take Jr/Sr Humanities & ME Technical electives early to avoid scheduling conflicts in Sr year.

2. **COM 3000** Writing Proficiency Exam is a graduation requirement; can be taken when 55 credits are completed and is a prerequisite for the JR/SR Humanities elective

