

How to get a Rational Rose license key

1. Send a request to Wenping (wp_bo@ltu.edu) via email. She will add you to the members' list in IBM Rational License Key Center.
2. You will hear from Rational License Key Center with the license center link provided in the email as well as the temporary password (your email address is the user name). This email arrives within two days.
3. The email you receive will look like this (see screen shot below):

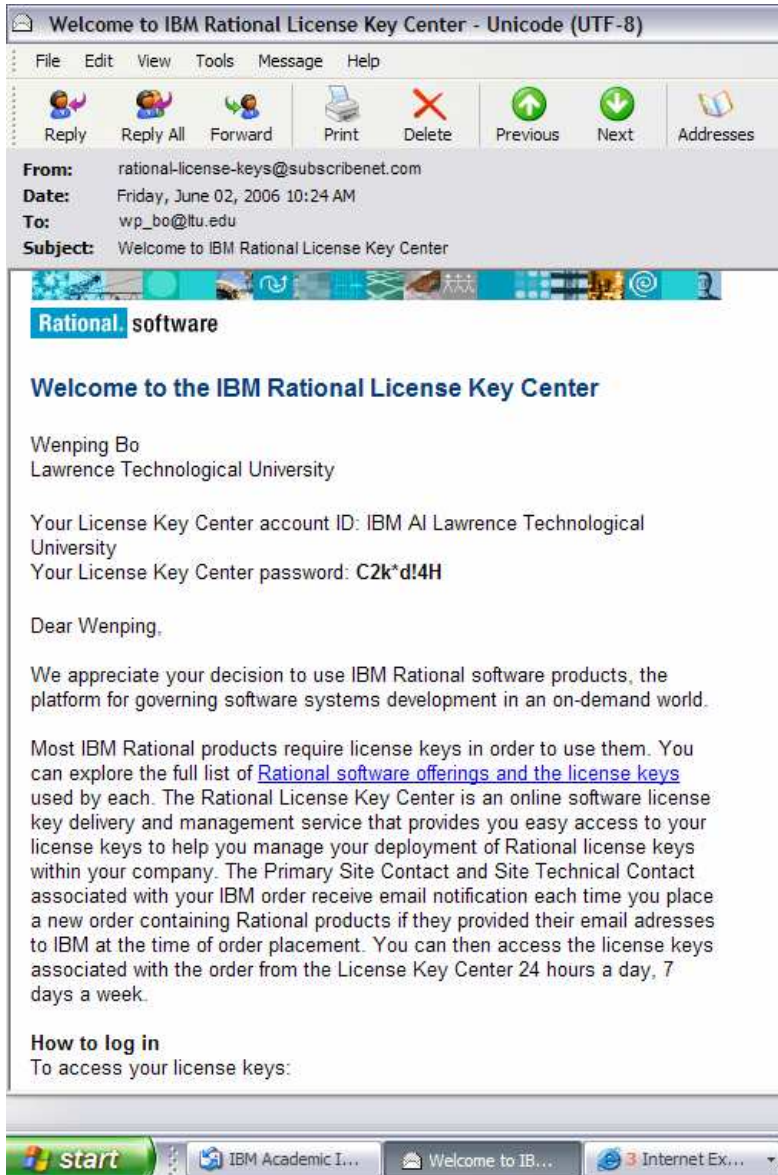
I suggest that you go to step 3 and log in directly to the license center without going to the IBM site since you already have your username and password. Later on when you want to download software, do 1 and 2.

How to log in

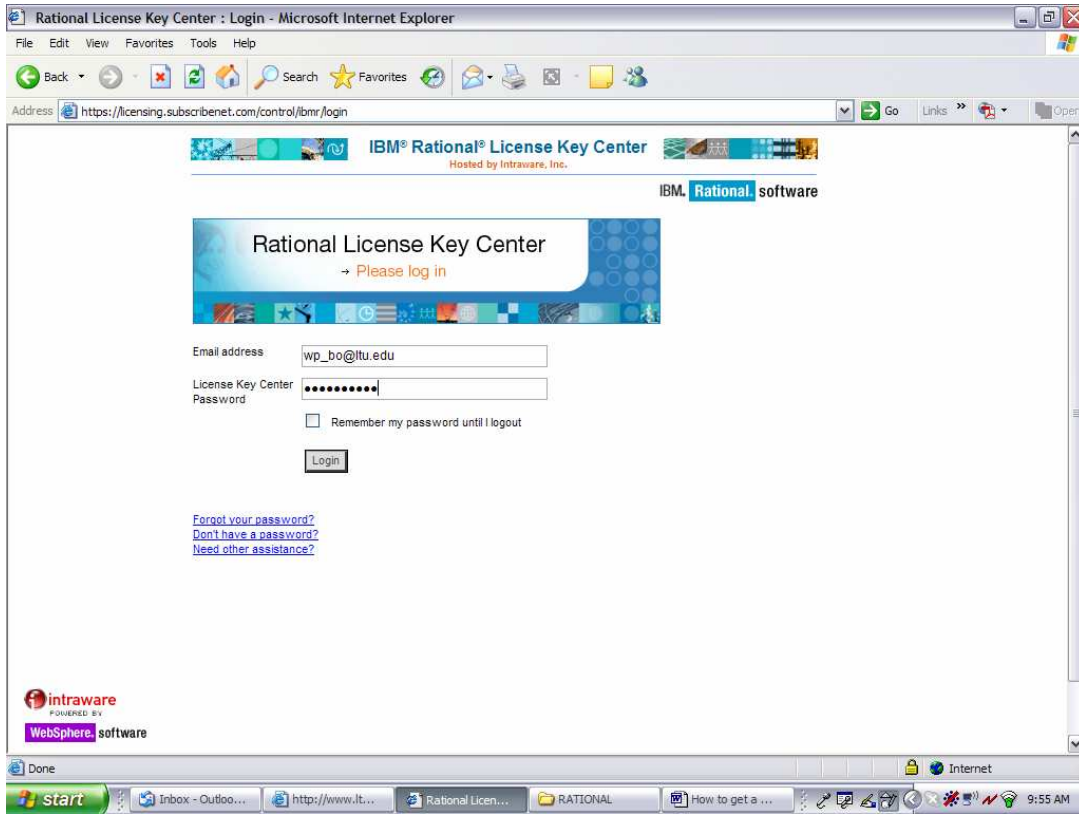
To access your license keys:

1. Connect to the [IBM Rational licensing support site](#)
2. Log into the licensing and download area (the web address will be: https://www14.software.ibm.com/webapp/iwm/web/reg/signup.do?source=rational&lang=en_US)
3. Navigate to the IBM Rational License Key Center (the web address will be: <https://www14.software.ibm.com/iwm/web/rational/popupD.html>)
4. Log into the License Key Center using your email address as your ID and your temporary password: **C2k*d!4H**

The License Key Center will ask you to change your temporary password when you log in.



4. It is a bit tricky to come up with a new password (you will see when you read the requirements or when your new password doesn't work, be creative!) The License Key Center looks like this (see screenshot below):



5. Once you jump over that hurdle, you get to the license center page, on the left navigation, you will see "Get license key". Click on that, then select IBM Rational Suite License keys

Rational License Key Center - Microsoft Internet Explorer

File Edit View Favorites Tools Help

Back Search Favorites

Address <https://licensing.subscribe.net.com/control/ibmr/index>

IBM® Rational® License Key Center
Hosted by Intraware, Inc.

IBM. Rational. software
Wenping Bo
Company: Lawrence Technological University
Account ID: IBM AI Lawrence Technological University

My license keys
Get keys
View and return keys
View keys by host
View keys by user

My orders
View order history

Accounts and members
Account members
Join new account

Preferences
Change password
Email preferences
Product preferences

Getting help
Quick guides (multilingual)
Transition Guide
Video tutorials
FAQ
Rational support

Logout

Get keys

Welcome to the Rational License Key Center. This service simplifies license management, making it easier to make the most of your software development platform investment from Rational and helping you abide by the terms of your software license agreement.

Select the product line below to access your keys.

- [IBM Rational ClearCase license keys](#)
- [IBM Rational ClearQuest license keys](#)
- [IBM Rational Functional and Performance Testing license keys](#)
- [IBM Rational ProjectConsole and SoDA license keys](#)
- [IBM Rational PurifyPlus license keys](#)
- [IBM Rational RequisitePro license keys](#)
- [IBM Rational Rose and XDE license keys](#)
- [IBM Rational Suite license keys](#)

6. Then select IBM Rational Suite Enterprise Authorized User License Key

Rational License Key Center : Product Line IBM Rational Suite license keys - Microsoft Internet Explorer

File Edit View Favorites Tools Help

Back Search Favorites

Address https://licensing.subscribenet.com/control/ibmr/product?typ=sw&child_pline=8&cert_num=19007680&displayDetailedLicenseQuantity=null

IBM® Rational® License Key Center
Hosted by Intraware, Inc.

IBM. Rational. software
Wenping Bo
Company: Lawrence Technological University
Account ID: IBM AI Lawrence Technological University

My license keys
Get keys
View and return keys
View keys by host
View keys by user

My orders
View order history

Accounts and members
Account members
Join new account

Preferences
Change password
Email preferences
Product preferences

Getting help
Quick guides (multilingual)
Transition Guide
Video tutorials
FAQ
Rational support

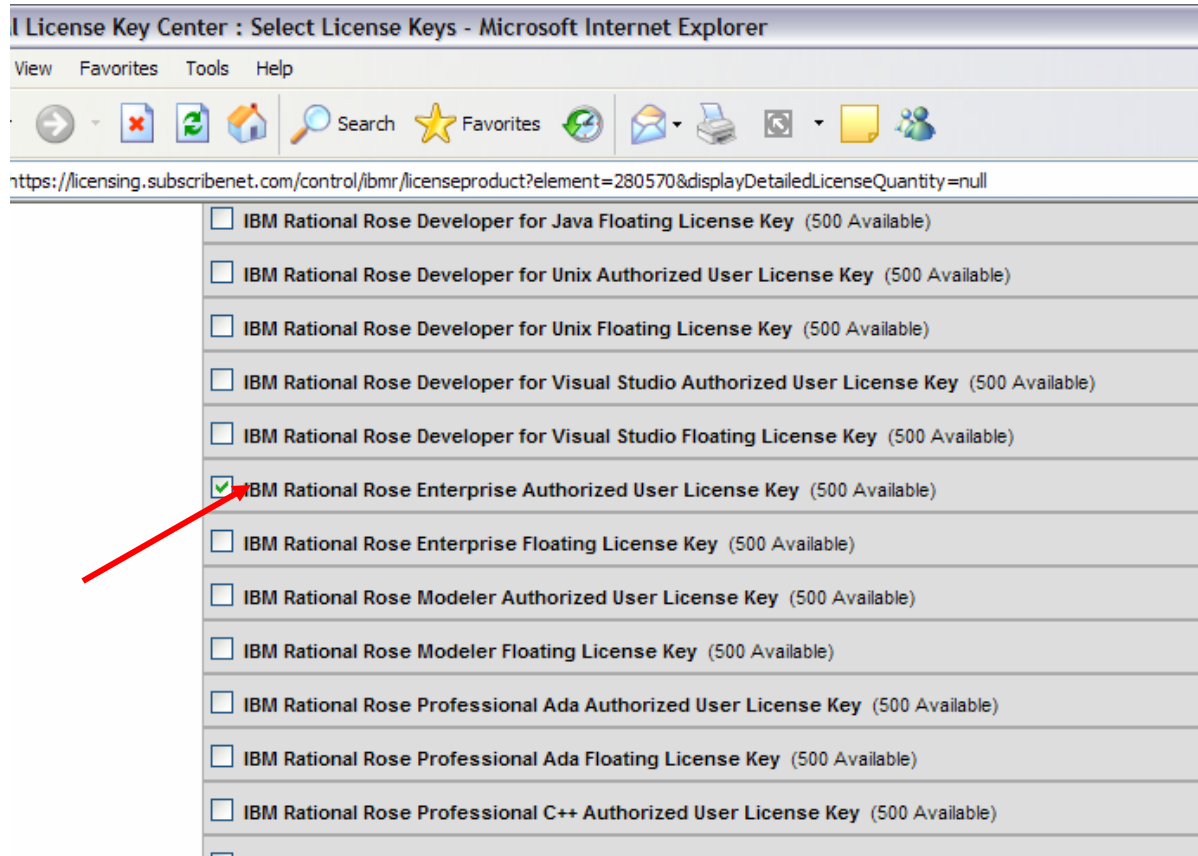
Logout

My License Keys

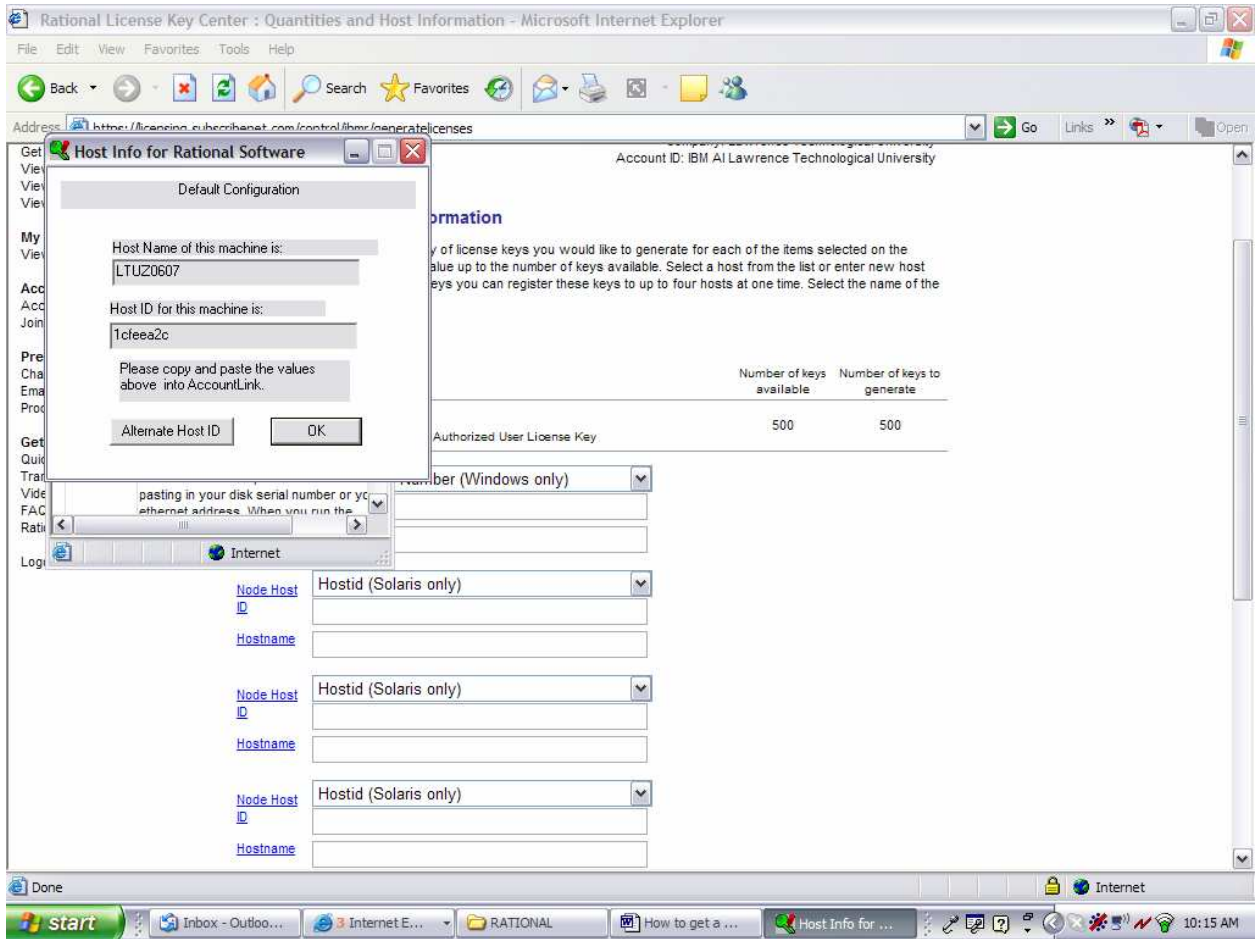
The items below represent license keys associated with your Rational software purchases. Select a product name to get the key. Click [order history](#) to view the history for your purchase.

License key name
IBM Rational Suite DevelopmentStudio Authorized User License Key
IBM Rational Suite DevelopmentStudio Floating License Key
IBM Rational Suite DevelopmentStudio RealTime for UNIX Authorized User License Key
IBM Rational Suite DevelopmentStudio RealTime for UNIX Floating License Key
IBM Rational Suite DevelopmentStudio RealTime for Windows Authorized User License Key
IBM Rational Suite DevelopmentStudio RealTime for Windows Floating License Key
IBM Rational Suite DevelopmentStudio for UNIX (UNIX Components) Authorized User License Key
IBM Rational Suite DevelopmentStudio for UNIX (UNIX Components) Floating License Key
IBM Rational Suite Enterprise Authorized User License Key
IBM Rational Suite Enterprise Floating License Key
IBM Rational Team Unifying Platform Authorized User License Key
IBM Rational Team Unifying Platform Floating License Key

- Then select IBM Rational Rose Enterprise Authorized User License Key (note: do not choose floating license, it is for server-client environment)
- On the page of “Select license keys”, click on the checkbox for IBM Rational Rose Enterprise Authorized License Key” which is at the bottom lower part of the page (see screenshot below)



9. Click on "Generate" at the bottom of the page, you will see the following page:



To get Host Name and Host ID, click on the hypertexts Node Host ID and Hostnames. For Host ID, change the O.S. to Windows only (you will need to run a small program to get the Host ID, just follow the instructions in the prompt box when you click on Node Host ID, see example above for my machine).

10. After you get the Host ID and Host Name, click on Generate at the bottom of the page, a license key will be generated for you on the next page. Click on "Download the license key" (see screenshot below).

Rational License Key Center : View Licenses By Host - Microsoft Internet Explorer

File Edit View Favorites Tools Help

Back Search Favorites

Address: https://licensing.subscribenet.com/ibmsnet/viewlicenses?viewLicenseID0=3204720&originParam=orderKey=&originServlet=licenseproduct&originPara...

IBM® Rational® License Key Center
Hosted by Intraware, Inc.

IBM. Rational. software
Wenping Bo
Company: Lawrence Technological University
Account ID: IBM AI Lawrence Technological University

My license keys
Get keys
View and return keys
View keys by host
View keys by user

My orders
View order history

Accounts and members
Account members
Join new account

Preferences
Change password
Email preferences
Product preferences

Getting help
Quick guides (multilingual)
Transition Guide
Video tutorials
FAQ
Rational support

Logout

View Licenses By Host

Back to Overview Print Friendly

Host Name: LTUZ0607
Host ID: 1cf6ea2c
Host Description:
Port Number:

Download License Keys

IMPORTANT NOTE - This license key file contains only the keys you obtained through the Rational License Key Center. Importing the file into your Rational software products will overwrite your existing keys. Before importing the file, we recommend making a backup copy of your [existing license key file](#). If your existing license key file contains keys you obtained using Rational's legacy AccountLink web tool, you will need to generate keys for those products again using the License Key Center. Please refer to the Transition Guide for details.

LICENSE KEY INSTALLATION INSTRUCTIONS FOR WINDOWS:

1. Select the "Download Keys" button and save the license key file with the .upd file extension.
2. [Download](#) and install an updated Rational License Key Administrator for v2003 and prior. The updated version corrects a display issue with multiple license keys for the same product. (580kb)
3. Open your license key file on the target machine after installing the Rational software.

13. Import the license key to the Rational Rose program. You are all set!