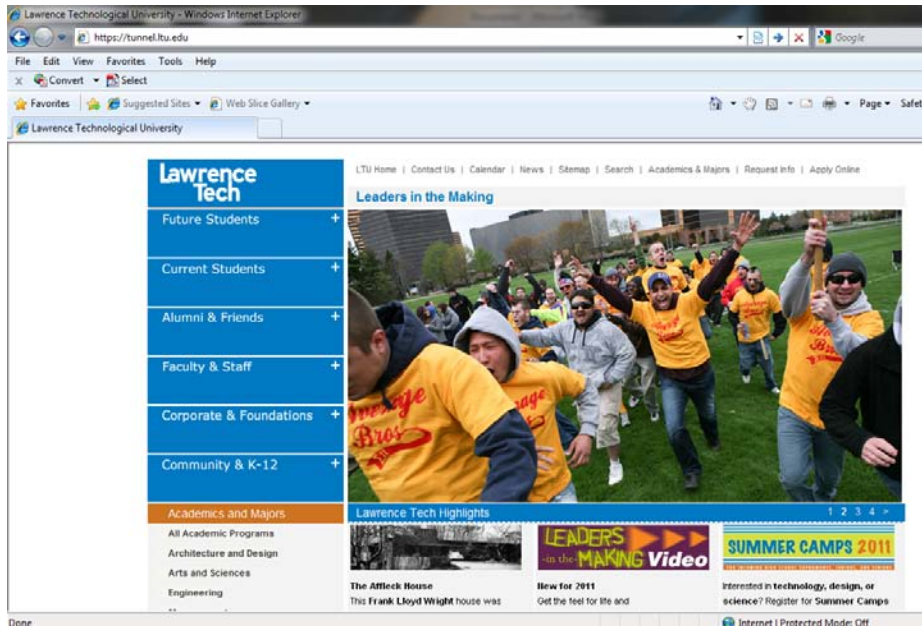


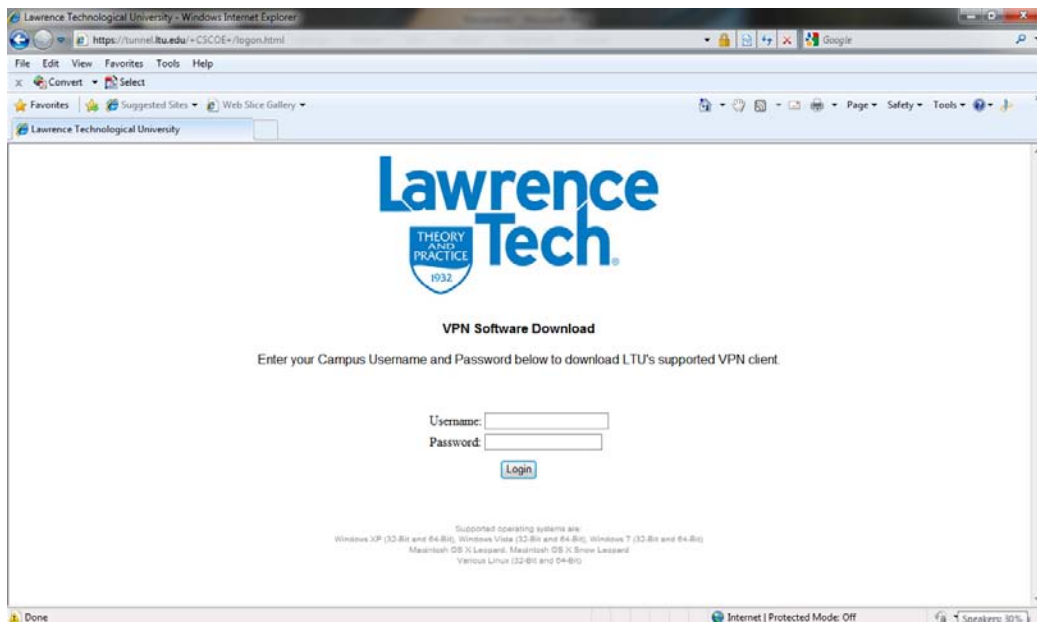
This Document explains how to set up your laptop or desktop to connect to LTU network resources using the Lawrence Tech VPN Service.

Logging into LTU VPN using Windows 7:

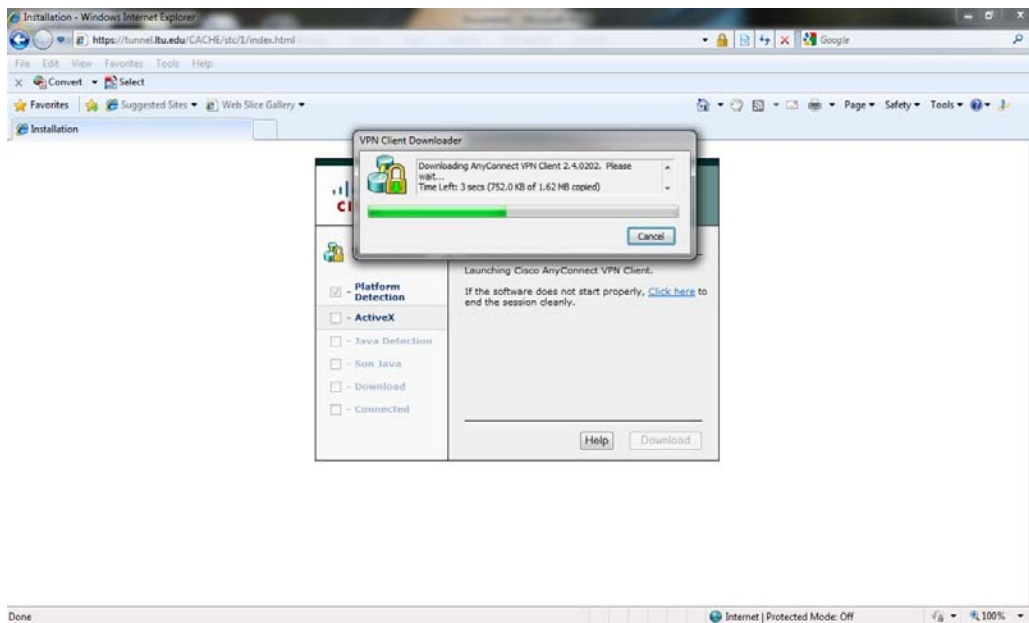
- 1) Open your browser and type <https://tunnel.ltu.edu> in the address bar and press Enter.



- 2) Enter your LTU computer/network username and password.



3) If you see a yellow bar at the top of your browser, allow it to download and install AnyConnect VPN client.



4) After the connection is established, you will see a green icon with a lock symbol on it in the system tray.



5) To disconnect the service, right click on the green icon and click Disconnect.