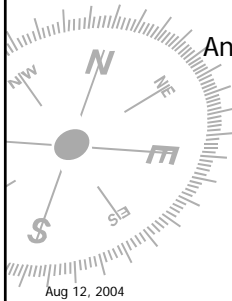


# LTU's Wind Delphi

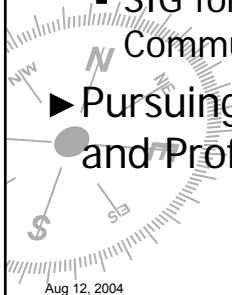
An Inquiry into Wind Turbine Siting Concerns in Michigan

Presented by Daniel J. Alberts  
August 12, 2004



## About me

- ▶ A BS in Engineering from U of M
- ▶ 12+ years in Technical Communication
- ▶ Society for Technical Communication
  - SIG for Environmental Health and Safety Communication
- ▶ Pursuing a Master of Science in Technical and Professional Communication

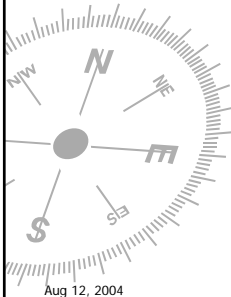


## Lawrence Tech

- ▶ Independent, fully accredited university, founded in 1932
- ▶ Offers more than 50 academic programs
  - Associate through Doctorate
- ▶ Approximately 700 faculty and staff, 5,000 students
- ▶ Partnerships with universities in Mexico, Germany and China

Aug 12, 2004

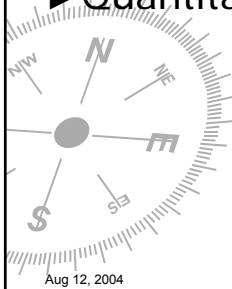
## What is a Delphi Inquiry?



Aug 12, 2004

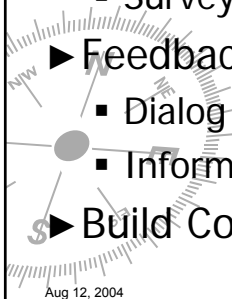
# History

- ▶ Originated by the Rand Corporation
- ▶ For Predicting Future Technology Trends
- ▶ Use judgments as input
- ▶ Quantitatively Analyze and Build Consensus



# Characteristics

- ▶ Iterative process
- ▶ Different forms
  - Conference – face-to-face discussions
  - Surveys – maximize participation
- ▶ Feedback
  - Dialog
  - Information packets
- ▶ Build Consensus among participants



## Previous Applications:

- ▶ Determine potential technology trends
- ▶ Determine impact of new technologies
- ▶ Siting power plants
- ▶ Settling water management disputes
- ▶ Determine Stock Market Trends
- ▶ Determining Tobacco control policy
  - <http://www.mc.uky.edu/tobaccopolicy/article%202.pdf>

Aug 12, 2004

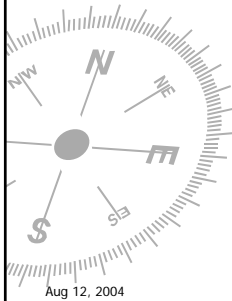
## Michigan Sea Grant Program

- ▶ Obtain judgments about which issues should be considered when planning management of Great Lakes Water Resources
- ▶ Exercises were designed to help participants develop informed judgments
- ▶ Convey the judgments to the communities which could benefit from the research
- ▶ Convey knowledge in ways that facilitated effective use
- ▶ More information:
  - <http://www.is.njit.edu/pubs/delphibook/>

Aug 12, 2004

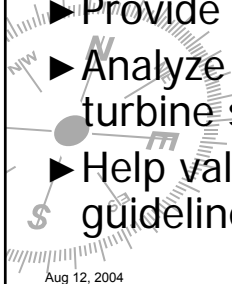
# A Wind Siting Delphi Inquiry

Our Concept



## Our Goals

- ▶ Contribute to the Michigan's effort to establish renewable energy technologies
- ▶ Provide a formal vehicle to gather and analyze concerns on a statewide level
- ▶ Provide a cross-fertilization of knowledge
- ▶ Analyze and build consensus on wind turbine siting issues
- ▶ Help validate and supplement pending state guidelines



# Proposed Method

- ▶ Currently Under Development
- ▶ Concept Phase
  - Develop goals and methodologies
  - Determine what concerns other organizations have included in their siting guidelines
  - Establish preliminary lists of concerns and participants
  - Ask the Wind Working Group for help
- ▶ Workshop Phase
  - Determine education/information needs – top 8 list
  - Help research topics
  - Open discussion sessions
- ▶ Iterative Surveys
  - Develop educational material
  - Conduct surveys
  - Provide feedback to respondents
  - Analyze and Build Consensus

Aug 12, 2004

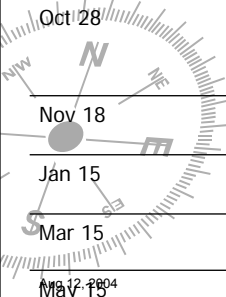
# Getting Started



©2004 Keele Chapman Dist. by Full Tilt Features.

Aug 12, 2004

# Approximate Timeframe



July 21	Start concepts
Sept 1	Complete a broad scope of concerns, and preliminary list of participants
Sept 23	Have half of information package Open discussion Determine specific survey questions
Oct 28	Complete information package Open discussion Determine specific survey questions
Nov 18	Mail first round survey
Jan 15	Mail second round survey
Mar 15	Submit draft report to NextEnergy
May 15 <sup>2004</sup>	Submit final report to MI Energy Office

# Next Steps

- ▶ Develop list of concerns
  - Review other State and Federal guidelines
  - Input from MWWG
- ▶ Develop Survey Questions
- ▶ Develop list of potential participants
- ▶ Develop information package
- ▶ Develop feedback mechanism

Aug 12, 2004